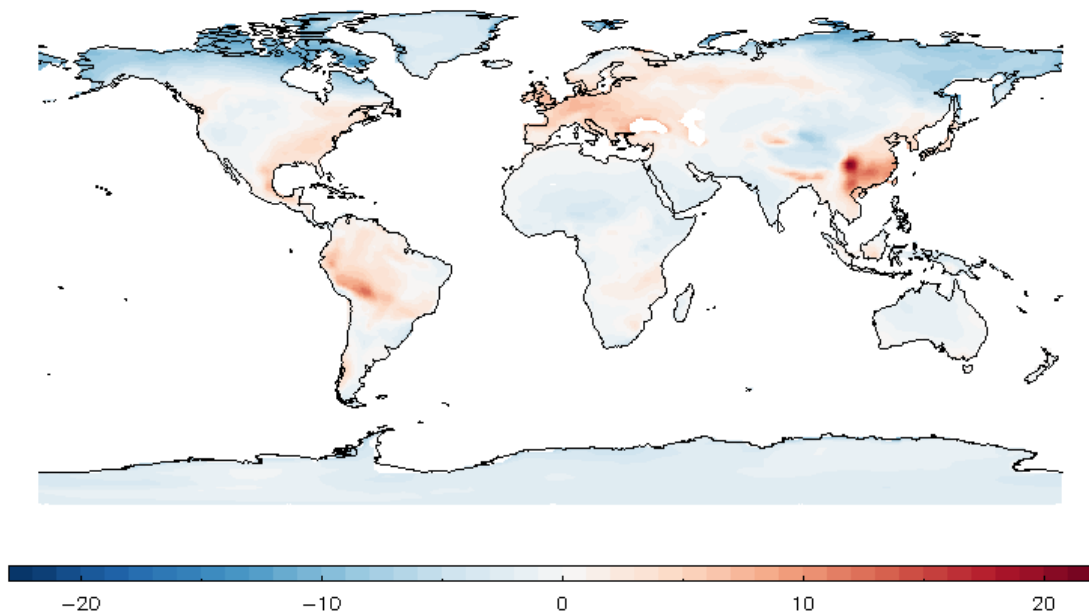


**Chris Smith @chrisroadmap**

1. The impact of climate change on the solar energy resource [#UoLTweCon](#)
2. Some areas will see changes in solar radiation reaching the Earth due to changes in cloud cover and aerosols [#UoLTweCon](#)
3. Temperature also affects solar cell efficiency. For silicon cells, efficiency declines by about 0.45% per degree C rise [#UoLTweCon](#)
4. Climate model data shows future solar photovoltaic output could be up to +/-20% different from today [#UoLTweCon](#)

% change in solar PV output in 2080, relative to 1980–1999



5. Novel methods of cooling solar panels could improve output, such as phase change materials which absorb large amounts of heat [#UoLTweCon](#)
6. The potential for phase change materials to keep solar panels cool during the daytime could be greater in the future [#UoLTweCon](#)

**Hannah Roche @heroche25**

1. Coming Out and Staying Out: Distance and Displacement in Modernist Lesbian Writing (1900-1950) [#UoLTweCon](#)
2. Why and how is the Modernist lesbian 'romance' characterised by separation and abstraction rather than proximity and intimacy? [#UoLTweCon](#)

3. Sexual identities linked to national identities: key lesbian writers (Gertrude Stein, H.D., Djuna Barnes) all US expatriates #UoLTweCon
4. Distance necessary for lesbian modernists - from home, from hetero society and from own work (encoded writing/language games) #UoLTweCon
5. Stein –‘Mr Cuddlewuddle’ to partner Alice– disguised autobiographical lesbian romance (Q.E.D.) behind black mask (‘Melanctha’) #UoLTweCon
6. Lesbians were liberated in Paris but work remained stifled/separate. Life distanced from text. Writers ‘out’ but work in closet #UoLTweCon

### **Jayne Windeatt @jaynewindeatt**

1. Removing CO2 from the Atmosphere: Is Biochar up to the Job? #UoLTweCon
2. Plants naturally remove CO2 from the atmosphere during photosynthesis and return it during respiration and decomposition #UoLTweCon
3. Turning waste plant material into a charcoal substance ‘biochar’ may store the carbon and also produces renewable energy! #UoLTweCon
4. When added to soils this biochar could store carbon, improve soil quality and increase crop yields. Possible multiple benefits! #UoLTweCon
5. How much char is made in climate/socio-economic scenarios to 2100? How long would carbon stay when the char is added to soils? #UoLTweCon
6. Scenarios for East Asia show CO2 removal of 24 to 29Gt CO2 over 95 yrs. Effects of char addition to soil now needs exploring #UoLTweCon

### **Lisa Long @TheRealLJLong**

- 1 Without Consent? Policing African Caribbeans in an Unequal Society (UK) #UoLTweCon
- 2 2011 riots not ‘race riots’. Unfair policing, stop & search & death in custody cited by interviewees #UoLTweCon <http://www.guardian.co.uk/uk/series/reading-the-riots>
- 3 RQ’s How do African Caribbeans experience policing? Has this changed 1980’s-2012? How do class and gender impact on experience? #UoLTweCon
- 4 Despite changes 2 policing African Caribbeans have lower levels of trust & less likely to report being victim of crime #UoLTweCon

5 Next stage; critical analysis of changes to policing. Post-Scarman & Macpherson legislation, policy and procedure 1981-2012 [#UoLTweCon](#)

6 Lit rev ch1; African Caribbean experiences of policing are un/der-researched. Qual Res Yr 2 field work-Watch this space! [#UoLTweCon](#)

### **Laura Harrison @Lau\_Harrison**

1. The City Imagined and Re-defined: leisure, courtship and space in York, c.1880-1920 [#UoLTweCon](#)

2. What did the streets of York mean to young w/class and how were these meanings expressed, challenged & controlled? [#UoLTweCon](#)

3. The street was an integral part of the city and central to the social lives of young w/class [#UoLTweCon](#)

4. Utilising records held [@YorkLibrariesUK](#): Police files, court proceedings, newspapers, Penitentiary records & oral testimony [#UoLTweCon](#)

5. Police, magistrates and reform institutions attempted to control the urban space in which social relations were played out [#UoLTweCon](#)

6. Many young w-c challenged interpretations of their behaviour in the streets & re-defined the meanings of certain public spaces [#UoLTweCon](#)

### **Audrey Thorstad @AudreyThorstad**

1. Tudor Castles: Lineage, Local Politics and Martial Prowess [#UoLTweCon](#)

2. Why did late medieval noblemen still live in, maintain and build castles if they were no longer used for defensive purposes? [#UoLTweCon](#)

3. Noblemen such as John de Vere, 13th earl of Oxford used his newly renovated castle, Hedingham, Essex, to achieve three purposes. [#UoLTweCon](#)

4. Firstly, Hedingham castle was used to ostentatiously display his lineage which spans English history since the Norman Conquest. [#UoLTweCon](#)

5. Secondly, it was used to gain a foothold in the local politics & helped Oxford gain local domination in East Anglia. [#UoLTweCon](#)

6. Lastly, castles were used to proclaim martial prowess. Castles have a long history one that doesn't end when siege warfare ends. [#UoLTweCon](#)

## **Lucy Anderson @lucyganderson**

1. Non native invasive species = plants/animals introduced to the UK from other countries. Once here they establish & spread. [#UoLTweCon](#)
2. These species which include [#signalcrayfish](#), [#killershrimp](#) cost UK ~£2bn pa to manage! [#UoLTweCon](#)
3. Invaders in UK waterways are among worst culprits. They cause riverbank collapse, block water pipes & introduce new diseases [#UoLTweCon](#)
4. I'm surveying anglers/canoists to investigate how these species/their pathogens may be accidentally spread between waterbodies [#UoLTweCon](#)
5. Also testing how long they can survive on angling/boating equipment in the lab and how [#biosecurity](#) awareness can be improved. [#UoLTweCon](#)
6. Do your bit to help stop the spread: Check Clean Dry your kit after using it in water: <https://secure.fera.defra.gov.uk/nonnativespecies/checkcleandry/index.cfm> ... [#UoLTweCon](#)

## **Sarah Todd @ sjt**

- 1 The Stuff that Dreams are Made on: Forms of Visions, Prophecies and Revelations in Petrarch and Boccaccio [#UoLTweCon](#)
- 2 By looking at the origins of dream-vision literature (DVL) - myths, biblical prophecies, etc - I discuss how P&B manipulate [#UoLTweCon](#)
- 3 the conventions of DVL in their own works. I look specifically at common themes (spirit-guide, spring setting, etc) to determine [#UoLTweCon](#)
- 4 the sources with which each author engaged & how this aids our understanding of medieval dream-theory. I argue that dreams are [#UoLTweCon](#)
- 5 used as a distancing device to facilitate discussions of taboo subjects (eg sex). My research has so far focused on classical, [#UoLTweCon](#)
- 6 antique, biblical & early medieval sources to define the complex tradition from which Petrarch & Boccaccio's works emerged [#UoLTweCon](#)

### **Jeremy Harmer @jmharmer**

1. Is Internet privacy dead? [#UoLTweCon](#)
2. China is often viewed by the West as an authoritarian state which desires complete surveillance of it's population [#UoLTweCon](#)
3. Yet the US and UK have many laws now some of which allow unfettered surveillance of foreign Internet traffic for any reason [#UoLTweCon](#)
4. Data retention stores facts of all communications without due cause; function creep - UK RIPA used to spy on dog walkers [#UoLTweCon](#)
5. The latest step, the UK communications data bill seeks to record even more information about our online activities [#UoLTweCon](#)
6. With so many invasive laws the West cannot sit back and point its finger at China - Internet privacy may finally be dead. [#UoLTweCon](#)

### **Cassey McRae @CasseyMcRae**

1. Improving the Success Rates of In Vitro Fertilisation (IVF): Can We Predict the Best Eggs to Fertilise? [#UoLTweCon](#)
2. The success rates of IVF are unsatisfactorily low: just 24% of IVF attempts result in a live birth [#UoLTweCon](#)
3. Given the emotional and financial investments patients make in IVF, finding a way of improving success rates is paramount [#UoLTweCon](#)
4. To address this, I analysed the fluid around eggs in the ovaries to see if it contains any clues about the quality of the eggs [#UoLTweCon](#)
5. The fluid around eggs that gave a pregnancy following IVF contained higher levels of certain small molecules [#UoLTweCon](#)
6. Therefore, it may be possible to use these molecules as markers to identify the eggs most likely to give a pregnancy [#UoLTweCon](#)

### **Aijan Sharshenova @ForeverStudent9**

1. Attention please! EU democracy promotion in Central Asia: implementation in Kazakhstan and Kyrgyzstan #UoLTweCon
2. "The EU people smile, say kind words - and do nothing" said a Central Asian official. Not reasonable, isn't it? #puzzle #UoLTweCon
3. #ResearchQuestion To what extent has #EU #democracy #promotion been successful, and why? Mostly why #FirstWorldProblems #UoLTweCon
4. #Fieldwork in Belgium, Kazakhstan & Kyrgyzstan: Interviews with local stakeholders, EU officials, implementers, & NGOs #UoLTweCon
5. I look at 3 #dimensions of why #democracy promotion does not work well in #CentralAsia #CA: local, #EU, & regional #UoLTweCon #freeKG
6. #Democracy promotion makes me sad, but we shall make it work #YesWeCan Current efforts & local responsiveness #GiveMeHope #GMH #UoLTweCon

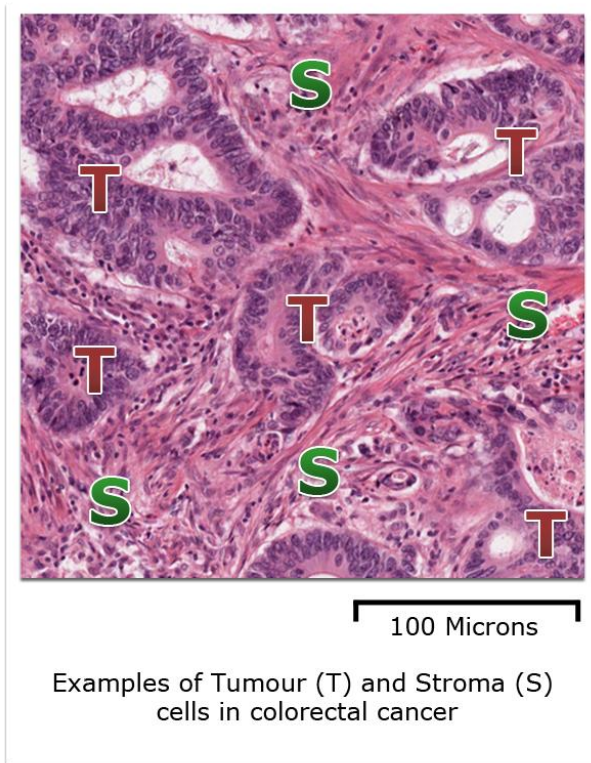
### **Sheryl McDonald @Sheryl McDonald**

1. Transforming Popular Romance on the Edge of the World: 'Nítíða saga' in Late Medieval and Early Modern Iceland #UoLTweCon
2. Medieval romances translated into Old Norse inspired Icelanders to write their own romances from the 14th century onwards #UoLTweCon
3. 'Nítíða saga' (NS) is one such late medieval Icelandic romance but it challenges the genre's norms and expectations #UoLTweCon
4. Instead of the expected male hero questing for a bride, NS has a female hero and we see bridal-quest from her point of view #UoLTweCon
5. NS considers the relation of gender & power, and is a great example of Icelandic appropriation of medieval European romance #UoLTweCon
6. This subversive romance was popular for centuries: its 65 manuscripts date from 1400s–1900s & have more research potential #UoLTweCon

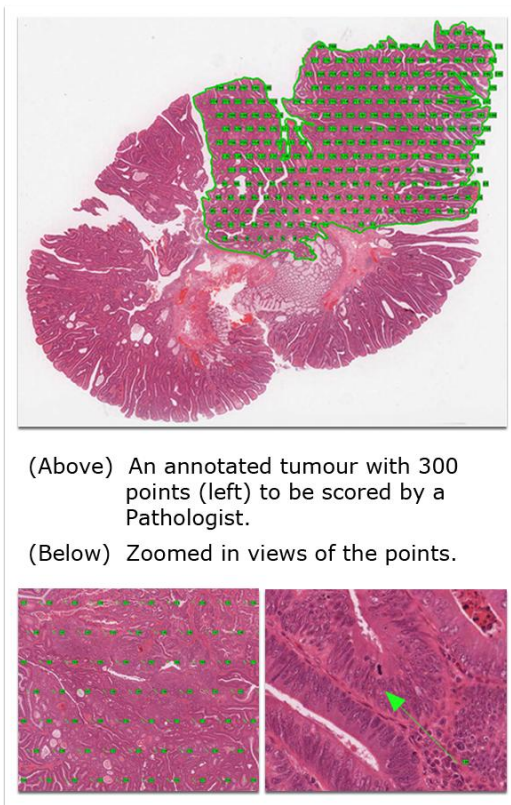
### **Alexander Wright @AzaWright**

1. Automatically Improving Patient Selection for Chemotherapy #UoLTweCon
2. Colorectal cancer kills 16,000 people in the UK per year. Chemo is a standard treatment but is toxic and doesn't always work #UoLTweCon

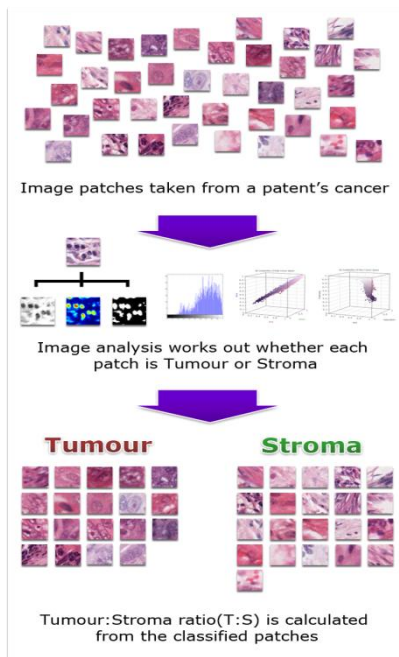
3. The ratio of certain cells (T:S) within a patients cancer can predict how they will respond to chemo [#UoLTweCon](#)



4. Currently, calculating T:S requires subjective estimates or counting hundreds of points on tissue samples [#UoLTweCon](#)



5. Using existing data, we teach an algorithm what different cells look like, to calculate T:S automatically [#UoLTweCon](#)



6. Automatically calculating T:S identifies which patients will benefit from chemo 97% faster than a pathologist, w/o human error [#UoLTweCon](#)

### **Rici Marshall @RiciMarshall**

1) Rethinking Why We Demand Energy: Maintaining Residential Wellbeing Through Consideration of "Energy Services" [#UoLTweCon](#)

2) Motivation in the numbers: 26% of UK energy use in houses x predict 80% of 2050 buildings already built=huge retrofit challenge [#UoLTweCon](#)

3) Who actually wants to have electricity and gas? We want "Energy Services": thermal comfort, illumination, sustenance, hygiene [#UoLTweCon](#)

4) If we can measure service delivery rather than kWh of electricity & m<sup>3</sup> of gas we can better compare efficiency of technologies [#UoLTweCon](#)

5) Improved service of thermal comfort can be provided by a better boiler, radiator or better insulation...which is most effective? [#UoLTweCon](#)

6) The energy, exergy & services efficiency metrics I am developing will enable more meaningful analysis of building performance [#UoLTweCon](#)



### **Svava Petursdottir @svavap**

1. "Using information and communication technology in lower secondary science teaching in Iceland" RQ's How ? Why so little? #UoLTweCon
2. Use of ICT in Icelandic schools is low, supporting, extending, but rarely transforming teaching practice, #UoLTweCon  
<http://www.med8.info/cpf/twining/twining-details.htm>
3. 3 interventions: resources which are appropriately interactive and relevant to the curriculum positively impact pupil learning #UoLTweCon
4. Factors affecting ICT use of Icelandic teachers: resources, time, knowledge and subject culture. ICT use is not a priority #UoLTweCon
5. Teachers pedagogical content knowledge seem to have more impact on pupil learning than the teaching resources used #UoLTweCon
6. There is potential for ICT to positively impact teaching with more CPD, cooperation, a shared vision and adequate resources #UoLTweCon

### **Robert Winstanley-Chesters @gy07r3m**

- 1 "Landscape as Political Project" Environmental Management in the Democratic People's Republic of Korea #UoLTweCon
- 2 1516 Thomas More declared utopia "no where" (Οὐτοπία) in 1946 Kim Il Sung declared it could and must be built on Potong's banks #UoLTweCon
- 3 on nature management.Planning periods come & go,5 Great Nature Remaking Tasks are laid and "Rice is Immediately Socialism" #UoLTweCon
- 4 While Wittfogel & Ilychev struggle with Asian Mode north of 38th parallel earth from sea at Taegye is reclaimed & waters of the #UoLTweCon
- 5 Taedong tamed At 1990s turn world communism felled bringing arduous march & future as shell,continued development?This Uol PG.. #UoLTweCon
- 6 checks utopias present state,finds small progress to rate.DPRK's utopia much like here,at Juche 101,2012 still not to appear. #UoLTweCon

### **Osasuyi Dirisu @mailsuyi**

- 1.Rolling and Puffing: Why do adolescents Smoke Cannabis/Marijuana?  
#UoLTweCon

2 Cannabis is the most commonly smoked illicit by adolescents and damaging effect on health does not deter use. [#UoITweCon](#)

3 Criminalising use through the 'drug war' hasn't reduced demand for drugs and users are trapped in endless cycles of addiction [#UoITweCon](#)

4 Not all adolescents smoke and no single factor can explain why some adolescents are more vulnerable to smoke than others. [#UoITweCon](#)

5 The risk is better understood by examining an adolescent's social network, personality and his/her environmental influences. [#UoITweCon](#)

6. Surveys and interviews with adolescents will be used to evaluate the broad context in which they begin to smoke cannabis [#UoITweCon](#)

### **Scott Cole @ScottColePsych**

1. Using your past to imagine your future: The ability to imagine plausible events in one's lifetime and its link with human memory [#UoLTweCon](#)

2. Are there similarities between forms of Mental Time Travel which allow us to experience the past and future in the present? [#UoLTweCon](#)

3. Interestingly, those people who remember past events in greater vivid detail imagine the future with greater vivid detail also. [#UoLTweCon](#)

4. Another key finding: Where subtle memory problems exist in old age, similar problems are observed in the ability to imagine. [#UoLTweCon](#)

5. One patient's memory loss led to a clouded and formless future: E.g. He couldn't imagine anything he would do later that week. [#UoLTweCon](#)

6. A system allows mental time travel into the past and future. Now, I aim to uncover more about how and why we imagine the future [#UoLTweCon](#)

### **Ivona Petrache @IvanaPetrache**

1. Nano-friesbee smugglers for drug delivery [#UoLTweCon](#)

2. Nano-friesbee smugglers for drug delivery [#UoLTweCon](#)

3. Nanodiscs are assemblies organized as a disk-shaped lipid bilayer whose edge is stabilized by a scaffold protein [#UoLTweCon](#)

4. These nanodiscs can be prepared with controlled size and have access to both sides of the lipid bilayer domain [#UoLTweCon](#)

5.The system provides an environment for targeted delivery of hydrophobic agents protecting the inside content during circulation [#UoLTweCon](#)

6.Currently, a drug was successfully encapsulated into stabilized nanodiscs;ongoing work is focused on drug release rate [#UoLTweCon](#)

### **Sarah Wallace @shwallace**

1. The behaviour of radioactive strontium (Sr-90) in contaminated land: clearing up a nuclear legacy [#UoLTweCon](#)

2. Sr-90 is a contaminant in the ground at nuclear sites worldwide, inc. Sellafield, UK, where it adsorbs (sticks) to sediments [#UoLTweCon](#)

3. Understanding geochemical processes that control sorption of Sr-90 in the ground is key to remediation of contaminated land [#UoLTweCon](#)

4. When in contact with groundwater, Sr-90 is highly adsorbed to sediments, which limits its transport in the environment [#UoLTweCon](#)

5. BUT where waste fluid has leaked into ground, sorption is prevented by other chemical ions in the waste & Sr-90 is very mobile [#UoLTweCon](#)

6. Possible remediation strategy: contaminated soil could be 'washed' with solution containing ions that prevent Sr-90 sorption [#UoLTweCon](#)

### **Elizabeth Gaston @gastonfamily**

1 Colour Movements is a collaborative project with Phoenix Dance Theatre to explore the relationship between colour and pattern [#UoLTweCon](#)

2 It uses dance and design methodologies to explore complex colour interactions in Fair Isle knitted fabrics [#UoLTweCon](#)

3 Dramatic effects occur as colour theory interacts with pattern theory causing figural ambiguity or disrupts Gestalt principles [#UoLTweCon](#)

4 Research on knitted fabric design is absent from the canon of textile design theory [#UoLTweCon](#)

5 Colour change of knitted costume was produced with coloured lighting filters; changes in perceptual pattern were noted [#UoLTweCon](#)

6 The methodology is a fusion of theoretical and practical and could have interesting application in further design research [#UoLTweCon](#)

### **Rachel Forster @rach\_f14**

1. Questions of value. Using museum objects in prison based projects [#UoLTweCon](#)
2. Does the interaction with the museum objects help create a positive sense of identity in the prisoner participants? [#UoLTweCon](#)
3. 16 museum objects were taken into HMP Wakefield as part of a 12 week research project working with a group of 8 prisoners [#UoLTweCon](#)
4. Participants made a link between themselves and the objects-both out of their original context & trying to prove their worth [#UoLTweCon](#)
5. Considering different meanings of value made the prisoners see hidden values in some of the more obscure objects [#UoLTweCon](#)
6. This made them consider if the same is true of them as prisoners? What makes them valuable and what do they value? [#UoLTweCon](#)

### **James Pope @JamesPope10**

- 1 Plio-QUMP: Quantifying Uncertainty in Model Predictions for the Pliocene. A period 3 million years ago 3°C warmer than modern [#UoLTweCon](#)
- 2 Create a Perturbed Physics Ensemble investigating range of model parameter uncertainty in [@metoffice](#) climate model HadCM3 [#UoLTweCon](#)
- 3 Test the results of ensemble members against a reconstruction of sea surface & land temperatures using micro-fossils & pollen [#UoLTweCon](#)
- 4 Why? Palaeo (past) climates allow us to investigate the climate system to improve our understanding of how & why it changes [#UoLTweCon](#)
- 5 Previous Pliocene research found models are unable to reproduce pattern of high latitude warming & near modern equator temps [#UoLTweCon](#)
- 6 My work suggests top end of IPCC climate sensitivity range (~4°C) is needed in HadCM3 to improve data-model comparison. Thanks [#UoLTweCon](#)

### **Liz Bridger @LivingShared**

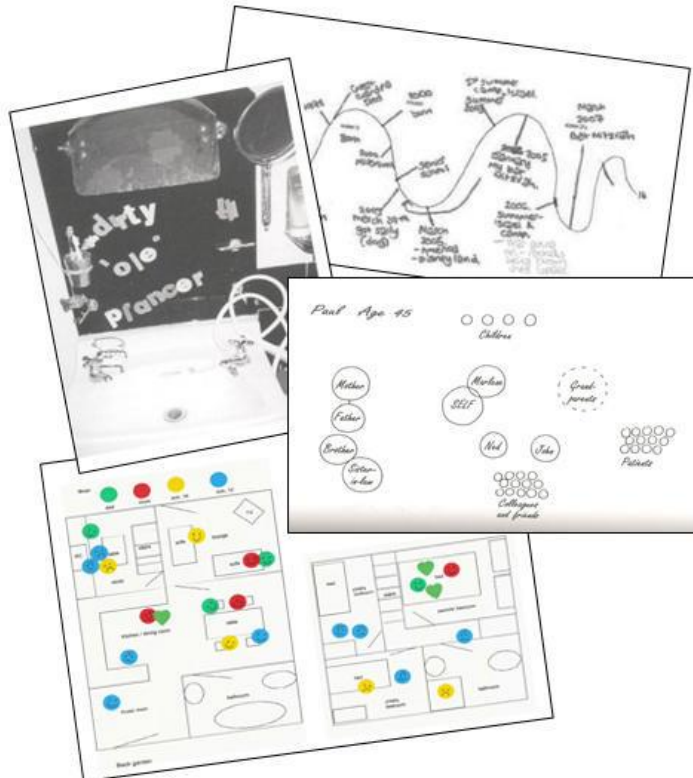
1. A sociological mixed-method investigation of households which include a couple and other unrelated adults in the UK. [#UoLTweCon](#)

2. Some couples live with housemates/lodgers; some people with live with couples. Why? What's the prevalence of this household? [#UoLTweCon](#)

3. How does this link to debates about relationships, adulthood and choice/constraint in the current socio-political climate? [#UoLTweCon](#)

4. Methods: Secondary Quant analysis; Qual in-depth interviews using diagrams & photos; follow-up interviews [pic.twitter.com/RDplh8gB](https://pic.twitter.com/RDplh8gB) [#UoLTweCon](#)

**Examples of Visual Methods used in Previous Research –  
Photos, Timelines, Relationship Maps and Household Maps**



From: Heath & Cleaver, 2004; [Bagnoli, 2009](#); [Josselson, 1996](#); [Gabb, 2009](#).

5. Answers of interests to sociologists, social policists, policy makers, housing organisations, landlords [#UoLTweCon](#)

6. Currently recruiting participants! People living in this arrangement aged 18 to mid-30s in Yorkshire [livingshared@leeds.ac.uk](mailto:livingshared@leeds.ac.uk) [#UoLTweCon](#)

**Sandra Nickel @I\_atent\_dead**

1 "Reflection & construction of religious & socio-political reality through language in the 19th century Yoruba mission." [#UoLTweCon](#)

2 Missionaries' journals & letters can tell us about activities, e.g. translation work & pastoral duties, and difficulties. [#UoLTweCon](#)

3 My research aims at reconstructing the translation process of Christian texts into Yoruba through African & European agents. [#UoLTweCon](#)

4 Aiming to shed light on missionaries' influence on language graphisation and standardisation, I ask: Whose language was Yoruba? [#UoLTweCon](#)

5 Christian texts in Yoruba facilitated 'Africanisation' of faith. Thus native interpretational authority could be reclaimed. [#UoLTweCon](#)

6 Missionaries' correspondence simultaneously reflects and constructs the interplay of linguistic, religious & political power. [#UoLTweCon](#)

### **Roula Maria-Nassif @roulamariadib**

1.The Mythic Method in Light of Alchemy in James Joyce's Ulysses, T.S. Eliot's "The Waste Land," and H.D.'s Trilogy [#UoLTweCon](#)

2.alchemy(verbal&symbolic)& mythic method collaborate 2provide a solution 4what the authors illustrate as a spiritual barrenness [#UoLTweCon](#)

3.mythic method merges ancient w new,&"alchemy of the word" expresses man's need for spiritual and psychic transformation [#UoLTweCon](#)

4.All 3 works call 4 spiritual transformation, esp thru liberating the "anima",the psyche's feminine counterpart [#UoLTweCon](#)

5.[@symbolic](#) level, Modernist poetics of Ulysses,The Waste Land,&Trilogy r read in terms of CG Jung's theory on alchemy [#UoLTweCon](#)

6.Transformative language of HD'sTrilogy,Eliot's Waste Land,& Joyce's Ulysses is read thru Arthur Rimbaud's "alchimie du verbe" [#UoLTweCon](#)

### **Mazen Al-Hajjar @MazenAlHajjar**

1. Would you like a hip replacement? Ooh, but how was it tested? [#UoLTweCon](#)

2. Last year, in the UK, more than 8,000 hip replacements failed in patients causing them more pain and costing the NHS millions [#UoLTweCon](#)

3. My thesis focuses on development of testing methodologies to test artificial joints before they are made available to patients [#UoLTweCon](#)

4. Current standard for testing artificial joints is not adequate and did not predict the failures recenety reported on the news [#UoLTweCon](#)

5. I have been testing artificial joints deliberately in the wrong position to predict their performance under adverse conditions [#UoLTweCon](#)

6. My research helped develop new method to test hip replacements so only safe and reliable ones are made available to patients [#UoLTweCon](#)

### **Nada Abuarab @NadaAbuarab**

1. TRPM2 channel trafficking and its role in cell death in HUVECs [#UoLTweCon](#)

2. TRPM2 channel is a Ca<sup>2+</sup> permeable cation channel that plays a role in several physiological processes associated with Ca<sup>2+</sup> [#UoLTweCon](#)

3. TRPM2 activation through H<sub>2</sub>O<sub>2</sub> leads to cell death. The goal is to focus on trafficking and to find out whether TRPM2 channel [#UoLTweCon](#)

4. Causes a redistribution of Ca and Zn between mitochondria and lysosomes and cell death. From the current study, it is found that [#UoLTweCon](#)

5. It is found that TRPM2 activation in HUVECs with H<sub>2</sub>O<sub>2</sub> led to cell apoptosis signs such as LMP, MMP and Caspase-3 [#UoLTweCon](#)

6. To conclude, TRPM2 activation has a role in cell death and can be used as a therapeutic of vascular hyperpermeability [#UoLTweCon](#)

### **Gloria Oliomogbe @Goliomogbe**

1 Competitiveness – Project Management Intangible benefits? [#UoLTweCon](#)

2 Organisations including non traditional project ones now use project management as traditional sources of competitiveness erodes. [#UoLTweCon](#)

3 Intangible benefits are one of the value drivers for competitiveness in organisations in today's knowledge economy [#UoLTweCon](#)

4 Project Management generates intangible benefits- Organisational, Human and Social Capital; are they contextual and measurable [#UoLTweCon](#)

5 Four projects in four organisations will be investigated reviewing the appropriate data sources and interviewing key experts [#UoLTweCon](#)

6 Project management intangible benefits drives competitiveness and the findings will help develop an approach to get more value [#UoLTweCon](#)

### **Nousheen Zakaria @nousheenzakaria**

1 A qualitative study of Strategic HRM planning process to implementation of 5 case-study banks in Pakistan [#UoLTweCon](#)

2 The study cascades the HR strategy planning process to implementation which has been ignored in the literature [#UoLTweCon](#)

3 Aims: HR policy integration with top management, HR policy formulation with HR department and implementation with line managers [#UoLTweCon](#)

4 Data reveals top management can change the shape of HR, by pushing to integrate HR policies with objectives of the companies [#UoLTweCon](#).

5 HR found active in integration and formulation stage, neglects implementation, line managers felt burdened with implementation [#UoLTweCon](#)

6 To conclude, HR dept needs to be proactive and be an active player throughout the process, employee voice not to be ignored [#UoLTweCon](#)

### **Samantha MacDonald @girlsammac**

1. Iodine chemistry in the remote troposphere [#UoLTweCon](#)

2. Iodine in lower atmosphere destroys ozone, affects oxidising capacity & forms new particles which may affect cloud formation. [#UoLTweCon](#)

3. Iodine is released from the oceans as organic iodine compounds by seaweed and phytoplankton. [#UoLTweCon](#)

4. More iodine is needed to match field observations – suggesting additional “inorganic” mechanism. [#UoLTweCon](#)

5. Lab studies of I<sup>-</sup> + O<sub>3</sub> reaction show this matches missing source, dependent on salinity, temp, & seawater iodide concentration. [#UoLTweCon](#)

6. Using maps of seawater iodide can calculate the flux of iodine from the oceans and impact of iodine on a global scale. [#UoLTweCon](#)

### **David Turner @dturneresq**

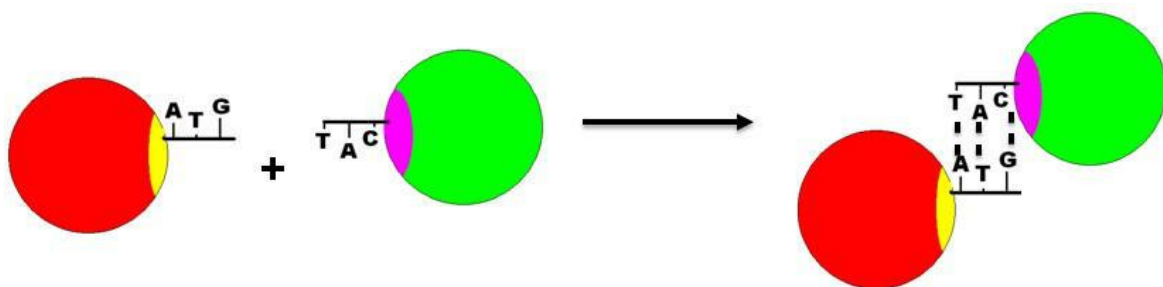
1. City Limits: A Phenomenological Enquiry into the Semiotics of the Urban [#uoltwecon](#)



2. Method: Qualitative interviews using structured and unstructured interview techniques. [#uoltwecon](#)
3. Research Justification A: The built environment has changed dramatically over the past 50 years [#uoltwecon](#)
4. Research Justification B: The pace of change in our built environment is likely to accelerate [#uoltwecon](#)
5. My research aims to contribute to the important public debate about the future of the built environment. [#uoltwecon](#)
6. Currently, I am finalising the research plan and aim to start interviewing in February or March next year [#uoltwecon](#)

### **Thomas Wild @tomjwild**

- 1 Developing coNnected nAnosomes.....with?[#UoLTweCon](#)
- 2 Cryptic title lets break it down. A nanosome is a lab made cell/cage and I want to make it a janus particle(cell with two faces)[#UoLTweCon](#)
- 3 Instead of faces lets think functional groups! 1 half of my lab cell has DNA attached to it and the other doesn't ie its janus![#UoLTweCon](#)
- 4 The DNA stuck to the cell will only be one half of the double helix therefore making a DNA STICKY PACH or lock with only 1 key [#UoLTweCon](#)
- 5 DNA comes in pairs so if I put complementary DNA on other cells the 2 types of cell will glue together.[#UoLTweCon](#) [pic.twitter.com/DKyCCXym](http://pic.twitter.com/DKyCCXym)



- 6 Joined cells means drugs caged together 4 super combat treatments in targeted delivery. In the lab I'm varying sticky patch size [#UoLTweCon](#)

### **Catherine Scott @catzgle**

- 1) The biogeochemical impacts of forests and the implications for climate change mitigation [#UoLTweCon](#)
- 2) Trees take in carbon from the atmosphere and store it as they grow – but could they be affecting the climate in other ways? [#UoLTweCon](#)
- 3) Remember that piney odour you can smell while walking through a forest? It's due to gases that trees are constantly emitting [#UoLTweCon](#)
- 4) These gases are really important because they contribute to the formation and growth of tiny particles in the atmosphere [#UoLTweCon](#)
- 5) Particles in the atmosphere control how bright clouds are, and how much of the Sun's energy is reflected back to space [#UoLTweCon](#)
- 6) Tree emissions form particles that are cooling the planet! Could planting more trees help limit future climate change? Thanks! [#UoLTweCon](#)

### **Esther Harper @EstherHarper88**

1. One man's Russia: cultural portrayal and representation of Russia in British travel writing of the 2000s. [#UoLTweCon](#)
2. Churchill said Russia was 'a riddle wrapped in a mystery inside an enigma' & this attitude prevails today. Who dares 'unwrap' it? [#UoLTweCon](#)
3. British travel writing on Russia - authors aim to consolidate/dispel myths & offer the ultimate portrayal of the real Russia. [#UoLTweCon](#)
4. Theory of Manifold Predications (7 blind men&elephant): one subject can be perceived&portrayed in multiple ways. Not 1 'Russia'. [#UoLTweCon](#)
5. 1author=1background&1experience=1portrayal=1perception of Russia. MUST understand 'knowledge' of Russia as relative, not absolute. [#UoLTweCon](#)
6. "It's what happened to us-it is the not the Russian story but..a Russian story"(Steinbeck) 1country, ∞accounts: read with caution. [#UoLTweCon](#)

### **Gwen Jacques @GwennieJacques**

1 “Lives not worth living”: healthcare professionals’ perceptions of what constitutes a serious handicap in the Abortion Act 1967 [#UoLTweCon](#)

2 Law allows abortion for fetal anomalies if child would have “physical or mental abnormalities as to be seriously handicapped” [#UoLTweCon](#)

3 Ambiguous law—serious handicap not defined, few guidelines. H. profs need to interpret serious in rel. to legality of abortion [#UoLTweCon](#)

4 Serious handicap is neither absolute nor necessarily tied to condition, depends on context. Decision making is complex [#UoLTweCon](#)

5 H. profs’ decisions on seriousness depend on weighing up respect for parents’ reproductive autonomy versus protecting fetus [#UoLTweCon](#)

6 H. profs’ decisions on what serious handicap is need to be made on a case by case basis, moderated by fetus’s moral status [#UoLTweCon](#)

### **Christine Chettle @Cherissonne**

1. Victorian Fantasy as Social Transformation in fiction by Charlotte Brontë, Charles Dickens, George Eliot and George MacDonald [#UoLTweCon](#)

2. Confrontations with an otherworld in Brontë’s texts actively challenge process of conceptualizing psychosocial identity [#UoLTweCon](#)

3. Dickens’s images of haunting dramatize the possibilities of reversing social deviance in various experiences of disability [#UoLTweCon](#)

4. Eliot’s texts combine stargazing and cognitive dissonance to foreground educational reform [#UoLTweCon](#)

5. MacDonald uses the discussion of fairy tales as an intersectional method to recover from mental health trauma [#UoLTweCon](#)

6. Examining the borders of Victorian narrativity provides context to challenge social tensions and to explore potential change [#UoLTweCon](#)

### **Maria Georgoula @MariaGeorgoula**

1. Is your Smartphone faithful to the printed reproductions of images? [#UoLTweCon](#)

2. Sometimes it turns out that the colours on your Smartphone’s display look differently from a printed image. [#UoLTweCon](#)

3. This happens because appearance of colours is affected by various parameters in the viewing field. [#UoLTweCon](#)

4. In mobile devices, these are: the size of display, the technology (AMOLED or LCD), the lighting and surround conditions, etc. [#UoLTweCon](#)

5. Building mathematical models for these parameters could improve the reproduction of images based on the required result. [#UoLTweCon](#)

6. So far, mobile devices seem capable of reproducing both accurate and preferred results under proper mathematical modelling. [#UoLTweCon](#)

**Saima Ahmed @Saims**

1 Delirium & Acute Stroke: Investigating incidence, severity & duration of delirium & the long term patient outcomes post stroke [#UoLTweCon](#)

2 Delirium (acute impairment of brain function) is linked to morbidity, dementia & higher risk of death [#UoLTweCon](#) [pic.twitter.com/pSLkGjV5](https://pic.twitter.com/pSLkGjV5)

**Table 2. Predisposing Factors for Delirium.**

Demographic characteristics
Age of 65 years or older
Male sex
Cognitive status
Dementia
Cognitive impairment
History of delirium
Depression
Functional status
Functional dependence
Immobility
Low level of activity
History of falls
Sensory impairment
Visual impairment
Hearing impairment
Decreased oral intake
Dehydration
Malnutrition
Drugs
Treatment with multiple psychoactive drugs
Treatment with many drugs
Alcohol abuse
Coexisting medical conditions
Severe illness
Multiple coexisting conditions
Chronic renal or hepatic disease
History of stroke
Neurologic disease
Metabolic derangements
Fracture or trauma
Terminal illness
Infection with human immunodeficiency virus

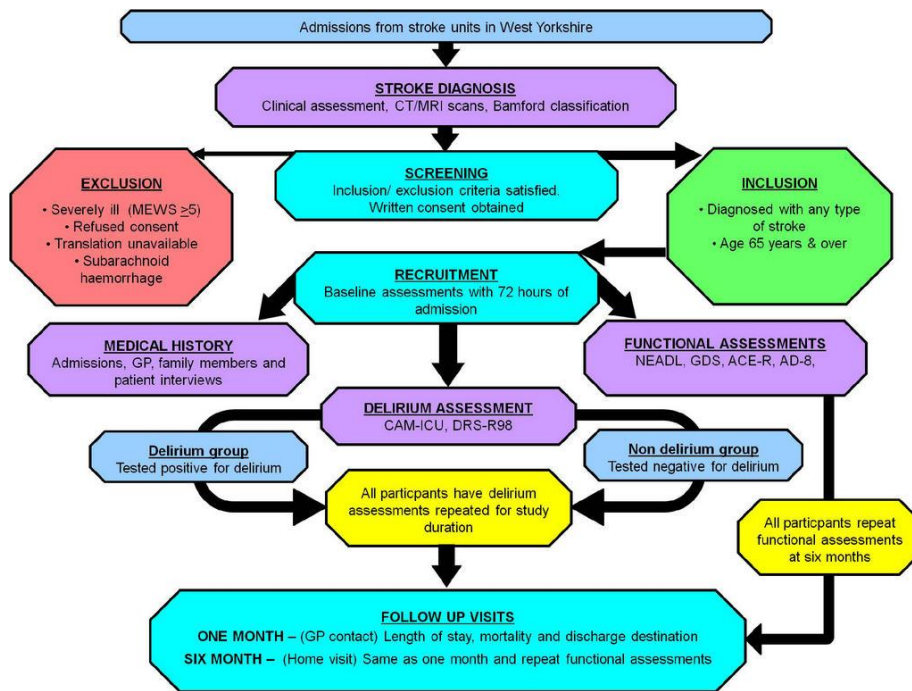
Reproduced with kind permission from the New England Journal of Medicine

**Table 3. Precipitating Factors or Insults That Can Contribute to Delirium.**

Drugs
Sedative hypnotics
Narcotics
Anticholinergic drugs
Treatment with multiple drugs
Alcohol or drug withdrawal
Primary neurologic diseases
Stroke, particularly nondominant hemispheric
Intracranial bleeding
Meningitis or encephalitis
Intercurrent illnesses
Infections
Iatrogenic complications
Severe acute illness
Hypoxia
Shock
Fever or hypothermia
Anemia
Dehydration
Poor nutritional status
Low serum albumin level
Metabolic derangements (e.g., electrolyte, glucose, acid-base)
Surgery
Orthopedic surgery
Cardiac surgery
Prolonged cardiopulmonary bypass
Noncardiac surgery
Environmental
Admission to an intensive care unit
Use of physical restraints
Use of bladder catheter
Use of multiple procedures
Pain
Emotional stress
Prolonged sleep deprivation

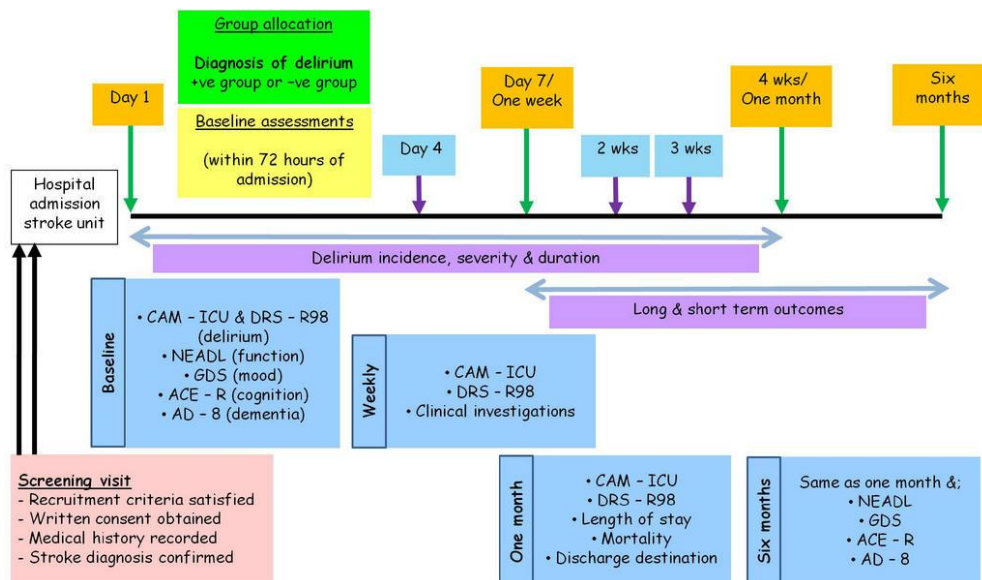
Reproduced with kind permission from the New England Journal of Medicine

3 Delirium may be more common in stroke. The aim: identify delirium incidence & investigate patient outcomes [#UoLTweCon](#) [pic.twitter.com/bRkPashw](https://pic.twitter.com/bRkPashw)



4 A prospective cohort study design was used to recruit, assess & monitor 295 stroke patients over 6 months #UoLTweCon

5 Purpose is to improve management/treatment of delirium in stroke by better training & introducing a standard screening protocol #UoLTweCon



6 Currently the study has completed recruitment & entered the follow up stages. Data analysis & interpretation is in progress #UoLTweCon

## **Warren Yabsley @Cancermarkers**

1 Breast Cancer: Detecting a Biomarker of Disease. [#UoLTweCon](#)

2 Can we detect breast cancer by studying substance (metabolite) levels in bodily fluids and tissue? [#UoLTweCon](#)

3 Diseases disrupt normal body conditions but your body regulates itself by altering its metabolism and hence metabolites. [#UoLTweCon](#)

4 Metabolite levels were analysed in blood plasma, urine and breast tissue extracts from control and cancer samples. [#UoLTweCon](#)

5 Concentrations of two metabolites were raised and one reduced with breast cancer. [#UoLTweCon](#)

6 Breast cancer can be detected by profiling metabolite levels from bodily samples. [#UoLTweCon](#)