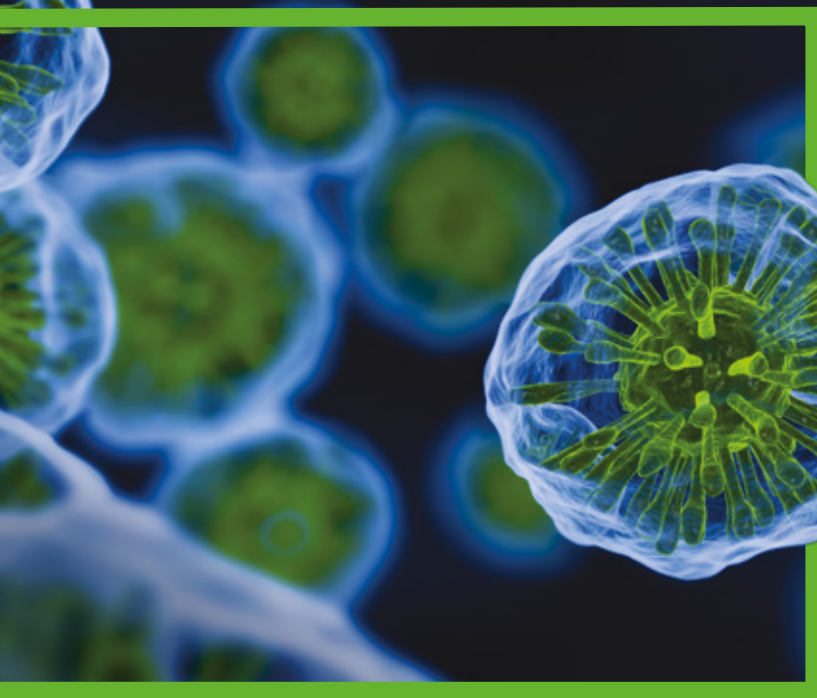


Postgraduate Research
2021



YOUR OFFER



UNIVERSITY OF LEEDS

OUR CAMPUS BY THE CITY

PARKINSON BUILDING

The iconic landmark building of the University

EDWARD BOYLE LIBRARY

Includes a postgraduate-only Research Hub

LEEDS DOCTORAL COLLEGE

Coordinates postgraduate research support and activities

THE EDGE

Swimming pool, gym and sports halls

ST GEORGE'S FIELD

A beautiful green space in the heart of campus

LEEDS UNIVERSITY UNION

Shops, cafés, music venues and home to our clubs and societies

Leeds city centre

Only a 10-minute walk from campus

Leeds train station

Parkinson Building

Leeds Doctoral College

The Edge

Edward Boyle library

Leeds University Union

St George's Field



IMPORTANT INFORMATION

Information provided by the University, such as in presentations, University brochures and on the University website, is accurate at the time of first disclosure. However, courses, University services and content of publications remain subject to change. Changes may be necessary to comply with the requirements of accrediting bodies or to keep courses contemporary through updating practices or areas of study. Circumstances may arise outside the reasonable control of the University leading to required changes. Such circumstances include industrial action, unexpected student numbers, significant staff illness (where a course is reliant upon a person's expertise), unexpected lack of funding, severe weather, fire, civil disorder, political unrest, government restrictions and serious concern with regard to the transmission of serious illness making a course unsafe to deliver. After a student has taken up a place with the University, the University will look to give early notification of any changes and try to minimise their impact, offering suitable alternative arrangements or forms of compensation where it believes there is a fair case to do so. The latest key information on courses, entry requirements and fees can be found at www.leeds.ac.uk/pgr. Please check this website before making any decisions.

CONTENTS

WELCOME TO LEEDS	4	DEVELOP AND CONNECT	20
		Develop your professional profile	21
NEXT STEPS	6	YOUR RESEARCH COMMUNITY	23
Understanding your offer	7	A welcoming community	24
Confirming your place	9	CITY LIFE	26
Postgraduate pre-sessional English courses	10	Living in Leeds	30
Fees and funding	11	CAMPUS LIFE	33
REDEFINING EXCELLENCE	13	Students' union	34
Research with impact	14	Sport and fitness	35
Our global challenges	15	WE'RE HERE FOR YOU	36
Working together with experts	16	Wellbeing and support	37
Making your contribution	17	Support for international researchers	38
Leading research facilities	18		
Academic study facilities	19		



WELCOME TO LEEDS

Congratulations on your offer. We're delighted that you are considering the University of Leeds as your next step.

*Top 100 university
in the world*

QS World University
Rankings 2021

Come to Leeds and you'll be part of a prestigious, research-intensive university in one of the UK's most diverse cities. Our postgraduate researchers are integral to our world-class research.

This guide provides you with important information about your offer, accommodation and our facilities for postgraduate study.

We hope that by the time you're ready to start your studies with us the situation with COVID-19 will have eased. However, please be aware, we will continue to review our courses and other elements of the student experience in response to COVID-19 and we may need to adapt our provision to ensure students remain safe. For the most up-to-date information on COVID-19, regularly visit our website, which we will continue to update as the situation changes.

www.leeds.ac.uk/pgrcovid19faqs



JOIN US

Explore your subject, meet our academic staff and chat to some of our current students at our postgraduate fairs and virtual events.

www.leeds.ac.uk/pgevents

CONTACT US

Contact our Doctoral College to discuss being a researcher at Leeds.

doctoralcollege@leeds.ac.uk

CONNECT WITH US



 Talk to current students and researchers about being an international student here.
www.leeds.ac.uk/linktoleeds

NEXT STEPS

Choosing the right university is an important decision and an investment in your future.

UNDERSTANDING YOUR OFFER

A postgraduate research degree at Leeds will give you a solid grounding for career progression, whatever your next step. We will provide you with an inspirational academic experience in one of the UK's largest universities, situated on the edge of a vibrant, affordable and diverse city.

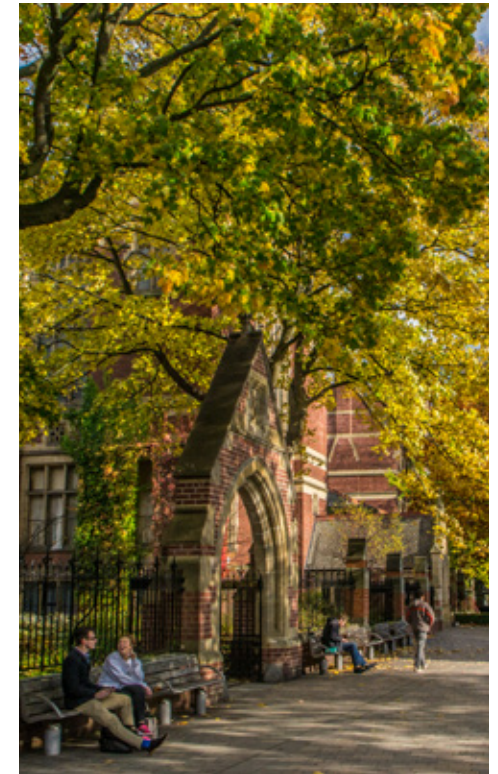
Everything you need to know about your offer and what you need to do next is explained in this section. Accepting your offer with us is just the beginning of your journey and we'll be there to support you every step of the way.

CONDITIONAL OFFERS

If you have received a conditional offer from the University, your place here is dependent on meeting the conditions outlined in your offer letter, which you will have received with this guide. To send further documents or accept your offer, visit

www.leeds.ac.uk/acceptonline

Once you have met the conditions of your offer you will be sent an unconditional offer. You do not need to accept this offer again, as long as the start date is the same.



UNCONDITIONAL OFFERS

If you have received an unconditional offer from us, you will have met all the relevant academic requirements. You can accept this offer at **www.leeds.ac.uk/acceptonline**

You may need to provide original or certified true copies of your academic qualifications and (if applicable) translations of them when you come to register with us. Your offer letter will state if you need to show any original documents. Contact your faculty graduate school if you need to change your start date.



To apply for your student visa you will need a Confirmation of Acceptance for Studies (CAS) from the University. The earliest we can issue a CAS is six months before the start date of your studies. The earliest you can make a visa application is three months before the start of your studies. You should only make a visa application and travel to the UK if your start date is the same as that on your offer letter. Contact your faculty graduate school if you need to change your start date. Read more about applying for your visa and the documents you will need at www.leeds.ac.uk/studentvisa

If your research is in a science, engineering or technology discipline, you must have an Academic Technology Approval Scheme (ATAS) certificate before you apply for your student visa. If this applies to you, further information will be sent to you. Even if you have not yet decided to accept your place at Leeds, you can still apply for an ATAS certificate. It can take several weeks for an ATAS certificate to be approved and issued, so please ensure you apply in good time.

www.fco.gov.uk/atas

Read more about visas, immigration and your responsibilities at www.ukcisa.org.uk/Information--Advice
www.gov.uk/student-visa

Immigration advice

The University's immigration advisors can answer questions about visa applications and advise on documents required at any stage in the process. Contact them at internationalstudents@leeds.ac.uk or, visit www.leeds.ac.uk/immigrationadvice

APPLYING FOR A VISA

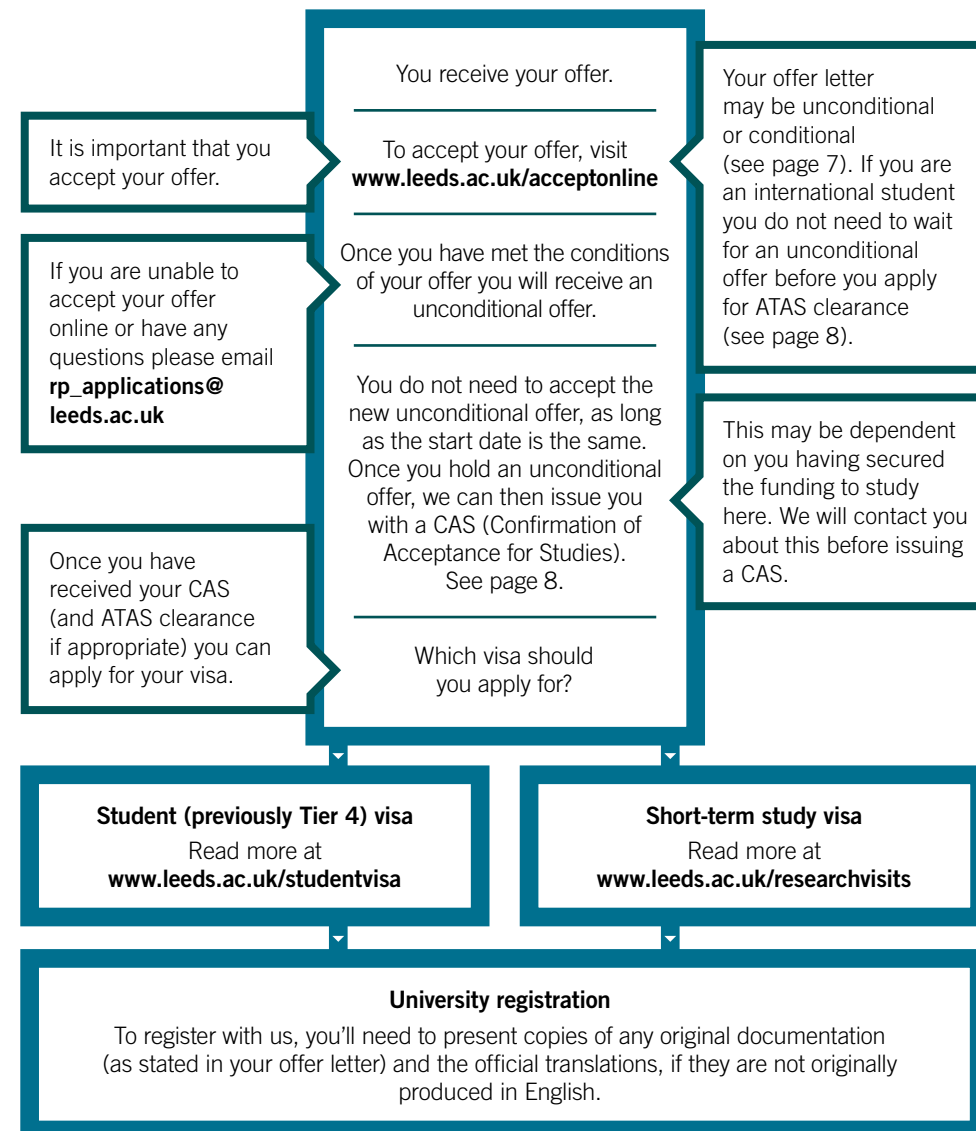
Nationals of some countries need a visa to study in the UK. Check if you need a visa at www.gov.uk/check-uk-visa

There are two types of visa for our students and researchers:

- student visa (previously called a Tier 4 visa) – the most common
- short-term study visa – for study visits of less than six months. Read more at www.leeds.ac.uk/researchvisits

A student visa is valid for the full length of your course plus a short period before and after study. It can be extended in certain circumstances and may allow employment in the UK depending on the level and length of study. It may be possible for family members to be your dependants if you hold a student visa.

CONFIRMING YOUR PLACE





POSTGRADUATE PRE-SESSIONAL ENGLISH COURSES

If English isn't your first language, the University's Language Centre can help you improve your academic English before your research degree starts and prepare you for life and research in the UK.



Our courses are full-time with start dates throughout the year.

What to expect:

- we'll help you improve your academic English to the level needed to be successful in a UK research degree
- develop the skills you need for research at a doctoral level, such as sourcing information, academic writing, critical thinking, discussions and other academic practices
- you'll have the opportunity to study with other students also preparing for research degrees using material from your subject area

HOW WE TEACH

You'll be taught by academics who contribute to research into teaching languages. Their findings influence how we teach our pre-sessional courses, so you can be sure the teaching on your course reflects the latest thinking and practices to help you get the most out of your learning.

Find out about entry requirements and how to apply at www.leeds.ac.uk/pgpresessional

FEES AND FUNDING

Investing in a postgraduate research degree is about investing in your future career and life beyond Leeds.

There are two main costs to factor into your financial planning: academic fees and living costs. You will need to provide evidence that you have the necessary funding to cover these costs and must pay them when asked to do so by the University. You'll find more information in your contract in your offer letter.

FINANCIAL SUPPORT

Postgraduate study is a big investment, but you may be able to get financial support from the University of Leeds or other funding bodies. You should also investigate what support is available from the UK government or your home government.

Postgraduate Doctoral Loans

The UK government offers Postgraduate Doctoral Loans to eligible students on a postgraduate doctoral course. You may be able to apply for a loan to help contribute towards course fees and living costs while you study. Check your eligibility and find out more at www.gov.uk/doctoral-loan

Scholarships

The University and external funding bodies, such as research councils, offer a range of scholarships to UK or international students that cover full or partial course fees and/or maintenance payments. Scholarships are very competitive so it is important you make enquiries and apply to all relevant sources as soon as possible.

www.leeds.ac.uk/researchdegreesfunding

The University has a range of scholarships available for specific projects through our Centres for Doctoral Training (CDTs) and Doctoral Training Partnerships (DTPs). We also offer doctoral scholarships across the full range of disciplines. Individual faculties and schools offer scholarships and awards too.

External funding bodies offer scholarships through the University. You will find funding opportunities advertised through external sources too.

You can search the funding section of our research opportunities directory for information about the wide range of scholarships we offer. To be eligible to apply for scholarship funding, you must apply for, or have an offer of, a place of study.

phd.leeds.ac.uk

Alumni bursary

If you are a former undergraduate or Masters student from the University of Leeds, you may be eligible for a 10% alumni tuition fee bursary. Check your eligibility and application deadlines at www.leeds.ac.uk/alumni_bursary

PAYING YOUR ACADEMIC FEES

Your academic fees have been included with your offer letter. If you have any specific questions, please contact your faculty graduate school.

Bench fees may be charged as an additional fee to cover the use of laboratory facilities and activities associated with a particular field of study. These fees will be assessed by your school on an individual basis. If they apply to you we have included them in your offer letter. In some faculties, scholarships may be available to cover all or part of the bench fee.

International fees are fixed at the point when you start your studies and will not rise in subsequent years, so you can more easily plan your finances at the outset.

For home and EU postgraduate researchers fees may increase each year, but only in line with inflation, calculated according to the Retail Price Index.

For up-to-date fee information, visit www.leeds.ac.uk/pgrfees

Self-funding researchers

Self-supporting postgraduate researchers can pay fees in full at registration or in two instalments.

If paying in two instalments, 50% must be paid when registering and 50% is payable by direct debit from a UK bank account approximately five months after your start date.

If you are receiving a Postgraduate Doctoral Loan from Student Finance England you can set up an alternative instalment plan in line with your loan payments. This alternative instalment plan will only be available if we have received confirmation from Student Finance England that your Postgraduate Doctoral Loan has been approved.

students.leeds.ac.uk/waystopay

Sponsored researchers

If you are going to be supported financially by your government, employer or other sponsor you must provide a letter from the sponsor (on headed paper), either before or on your arrival at the University. The letter must state the amount to be paid in pounds sterling (GBP) and the address for invoicing. Please send it to sponsors@leeds.ac.uk

Sponsors must pay fees in full when invoiced, as no instalment arrangement is available. If you are a sponsored researcher you will be unable to register until the sponsor letter has been received and confirmed by our Student Fees team.

www.leeds.ac.uk/sponsoredstudents

If you have any enquiries please phone Student Fees on **+44 (0)113 343 6700** or email pgfees@leeds.ac.uk

LIVING COSTS

In addition to academic fees, you will need to budget for living costs. Leeds is a relatively low-cost city compared to some areas of the UK, but you'll still need to budget carefully. Get money advice and budgeting tips at luu.org.uk/help-support

REDEFINING EXCELLENCE

Work with leading thinkers, push the boundaries of knowledge, contribute to research that matters.

Over 80% of our research rated 'world leading' or 'internationally excellent'

REF 2014



RESEARCH WITH IMPACT

Leeds is one of the UK's largest research-intensive universities, with more than 80% of our research rated 'world leading' or 'internationally excellent' (REF 2014).

We attract significant research funding and are investing in people and facilities to create research that matters.

We were the 35th most international university in the world in the Times Higher Education World University Rankings 2020. Around half our postgraduate researchers come from outside the UK and our staff are from over 90 different countries. More than half our research outputs come from international collaborations.

We want to attract tomorrow's researchers to Leeds. We offer a range of scholarships to try to ensure your ability to study with us depends on your talent, not your circumstances (see page 11).

**Top 10 UK
university for
research power**

REF 2014



OUR GLOBAL CHALLENGES

Researchers at Leeds are helping tackle some of the world's biggest challenges. Here are some of the ways our discoveries are making a real difference to society.

We're pioneering a technique to avoid rejection of transplant tissue by combining medical engineering and medical immunology expertise.

Our researchers were part of a breakthrough in the development of terahertz quantum cascade lasers. This could lead to ultra-fast transmission of data, potentially benefiting hospitals, research facilities and satellite communications.



We're estimating sea level rises more accurately using satellite data to generate information on polar ice thickness and melting rates.

We're supporting young conflict survivors across the world through an Arts and Humanities Research Council-funded project that helps them use creative media to understand conflict and share their experiences.

 Discover more about our leading research at www.leeds.ac.uk/research

WORKING TOGETHER WITH EXPERTS

We bring together researchers from different disciplines and backgrounds to combine disciplinary excellence and create an environment in which world-leading research can flourish.

INTERDISCIPLINARY SOLUTIONS

The world faces large and complex problems. In our drive to find answers, we bring together wide-ranging expertise to create extraordinary solutions.

We are:

- combining robotics, nanoparticles, ultrasound and lasers to develop a possible chemotherapy or radiotherapy alternative for head and neck cancers
- leading an £8m research programme, AFRICAP, to improve policymaking and develop sustainable and productive agriculture systems in the face of climate change
- changing the way we live through self-repairing cities, medical treatment and artificial intelligence at our national robotics centre

The University is home to several interdisciplinary centres, like the Priestley International Centre for Climate, the Bragg Centre for Materials Research and the Astbury Centre for Structural Molecular Biology, which pool interdisciplinary expertise to push the boundaries of knowledge.



We also work closely with a range of partners, including:

- industry and business to develop innovative commercial solutions
- charities and the health sector to increase understanding of health challenges
- government agencies and NGOs to provide expertise and influence policy
- academic colleagues nationally and internationally to achieve more together

Whatever your specialism, there will be opportunities for you to work with others in your discipline and across disciplines, within the University and in other institutions.



MAKING YOUR CONTRIBUTION

Postgraduate researchers are at the heart of the University's research – over half our submissions to REF 2014 included contributions from PhD researchers.

Choose Leeds and you'll join a community of around 4,000 postgraduate researchers. Whatever your field of interest, the scale and quality of our research gives you the opportunity to be part of internationally important work. You can work on existing projects or conduct your own independent research project. And you'll find all the facilities and support you need to excel during your time here.



YOUR SUPERVISORS AND YOU

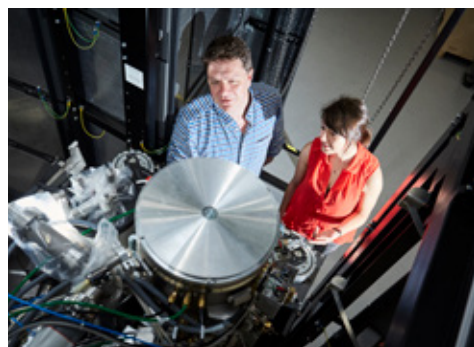
Finding the right supervisors for your project is a key part of choosing your research degree. Supervisors draw on their own experience to guide your work and to challenge, inspire and support you. They will be with you from the development of your research plan, through the creation of your thesis to preparing you for the viva – the final stage of your PhD.

You'll usually have at least two academic supervisors, at the forefront of their discipline and with the relevant specialist knowledge for your project. They'll provide support and encouragement, whilst empowering you to become independent in your working and thinking. They'll challenge your ideas, offer advice on training and development, review your progress, and provide guidance and feedback on your work.

LEADING RESEARCH FACILITIES

Our outstanding facilities provide an excellent platform for your research and enhance your academic experience. Some of the UK's leading research centres are based at the University and we're investing heavily to realise the potential of new technologies.

Here are just some of our research facilities:



ASTBURY CENTRE

Our Astbury Centre for Structural Molecular Biology has some of the world's most powerful cryo-electron microscopes, allowing molecular structure to be seen in unprecedented detail and enabling us to develop new treatments to combat global disease.



SPECIAL COLLECTIONS

From medieval manuscripts and a First Folio of Shakespeare's plays, to valuable business archives, the University's Special Collections is a unique resource for primary research.



CENTRE FOR IMMERSIVE TECHNOLOGIES

Our Centre for Immersive Technologies works in the areas of human-centred design, education, decision-making, cultural engagement and improving wellbeing, helping companies and organisations use virtual reality and augmented reality.

ACADEMIC STUDY FACILITIES

Our excellent facilities will support your research.

UNIVERSITY LIBRARY

The University Library is one of the major academic research libraries in the UK. It offers four libraries on campus, open throughout the year, at a wide range of times. You can choose from different working environments, equipped with the latest technology. You'll also benefit from expert support from library staff in literature searching, referencing, bibliometrics, open access and research data management.

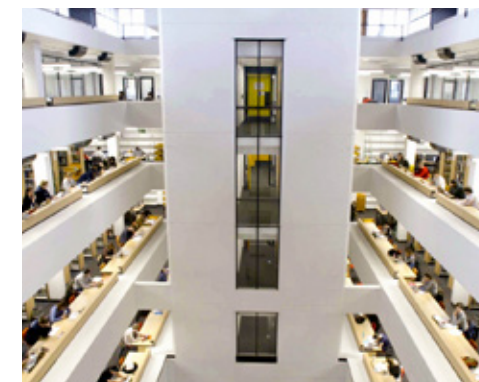
The postgraduate-only Research Hub in the Edward Boyle Library offers space for individual and group work, bookable individual and group study rooms with large LED screens, and lockers. It has extra-large study desks with wi-fi, individual lighting and power sockets – especially useful at writing-up stages of your research.

library.leeds.ac.uk

COMPUTERS AND IT

Through your University account, you'll be able to access the technologies and services to support your studies, including: a wide range of standard and specialist software and services; free access to licensed copies of Office Pro Plus; a suite of tools and services provided through Microsoft Office 365, seamlessly linked to your University account and securely available from anywhere in the world; free high-speed wi-fi across campus and IT help and support.

it.leeds.ac.uk



LANGUAGE LEARNING

If English isn't your first language, our University Language Centre offers pre-sessional English courses to international postgraduate researchers (see page 10).

Once you're studying here, you can access workshops and advice to continue improving your academic English language skills alongside your research.

If you want to improve your skills in a different language, our Language Zone has learning materials in more than 50 languages.

www.leeds.ac.uk/languagecentre

DEVELOP AND CONNECT

Share your research and connect with experts. Build your profile, networks and skills to shape your future.



DEVELOP YOUR PROFESSIONAL PROFILE

Building your professional profile is a key part of success as a postgraduate researcher. You'll need to develop new skills and networks to share and further your research. We offer connections and personal and professional development opportunities to help you realise your professional goals, whatever you decide to do next.

MAKING CONNECTIONS

We understand the importance of meeting others in your field, both in advancing your research and your future career. You'll be able to network with colleagues from the University and wider academic community, and industry experts, at national and international conferences and research events.

You may have opportunities to present and publish your research and provoke academic debate. Your supervisor will help point you in the right direction and our research collaborations mean you're well placed to meet academic and industry experts. You may also have chance to widen your professional network by working on industry projects and internships, and on large-scale collaborative research partnerships. Our commercialisation team identifies, evaluates and develops commercial opportunities for research conducted at the University.

As a researcher at Leeds, you'll be able to tap into one of the biggest alumni communities of any UK university – over 270,000 people in more than 190 countries.

YOUR PERSONAL AND PROFESSIONAL DEVELOPMENT

As a postgraduate researcher, you'll gain transferable skills that will be invaluable, whatever your chosen career – analysing and communicating complex information, working independently and as part of a team, and many more.

With a huge range of personal and professional development opportunities on offer you can focus on what you need.

Specialised workshops on topics from academic writing to advanced research computing are run by services across the University.

A host of self-directed resources are at your disposal. Through the University's Virtual Learning Environment (VLE) our Doctoral College offers courses to help you at all stages of your research, as well as with skills like project management and time management. Through LinkedIn Learning you'll have access to Leeds-specific research-related resources, as well as over 5,000 courses on topics from software and coding to personal and professional development.

Find out more at researchersupport.leeds.ac.uk

Your personal and professional development is agreed between you and your supervisor. It reflects your previous experience and personal and professional aspirations. It includes both specific research-related development and broader experiences, like challenging ideas and presenting at conferences.

An online record system, the Graduate Record of Achievement and Development (GRAD), helps you plan which conferences, courses and workshops to attend. It records meetings with your supervisors and development activity taken, with milestones to track your progress right up to completion of your research degree.

To develop your teaching skills, we offer a series of workshops which focus on the essentials for demonstrating, lecturing, small-group teaching and assessing student work, and there are opportunities to develop your teaching practice through lectures and practical sessions.

Leeds' award-winning student enterprise opportunities are also available to you as a postgraduate researcher.

www.leeds.ac.uk/enterprise

Our Careers Service offers a range of events, online resources, personal advice and support. They'll help you understand your strengths and market yourself effectively.

careerweb.leeds.ac.uk



YOUR RESEARCH COMMUNITY

Be part of our diverse, welcoming and supportive community.



A WELCOMING COMMUNITY

Your time with us is about more than your academic research and professional development. When you come to Leeds you're joining a diverse, welcoming and supportive research community. You'll find a host of opportunities to connect with others to share ideas and experiences, and there's help on hand if you need it. Whatever your specialism, you don't need to feel isolated.

LEEDS DOCTORAL COLLEGE

Our Doctoral College supports you throughout your postgraduate research journey. It brings together all the support services and opportunities to enhance your research, your development and your overall experience. It also celebrates your achievements.

There are regular training sessions, seminars and other events. Keep up to date with postgraduate researcher events and news through our monthly newsletters.

Meet your fellow-researchers and learn about the breadth of postgraduate research at the University at Research Nights, a programme of informal and accessible talks and discussions by our postgraduate researchers.

www.leeds.ac.uk/doctoralcollege



CONNECTING WITH OTHERS

Formal and informal collaboration with other researchers can help you gain new perspectives. Besides the opportunities through our Doctoral College, you'll find there are multiple ways to connect with your fellow-researchers at Leeds.

You will:

- have access to workspace in a shared office and/or laboratory. You'll work alongside researchers, academics and support staff and quickly become part of your school's community
- be part of a research group and, beyond this, an academic team. Their social events and coffee sessions are a relaxed way to meet and share ideas with academic colleagues
- be part of a faculty graduate school which will support you and offer opportunities to connect across schools and departments through conferences, seminars and socials. Your graduate school staff will advise you on everything from registration to examinations, and can point you to the wide range of University support services
- have access to University-wide seminars and events, where you can network and discuss your work with academics and fellow researchers

GLOBAL ENGAGEMENT

As a researcher in an outward-facing, global institution you'll have opportunities to engage with international researchers here and abroad.

You'll work alongside staff and students from many countries, with the richness of perspectives and insights this brings.

There are also lots of opportunities to socialise with people from different countries and cultures. Take advantage of our Global Community activities. Join one of the international student societies run through Leeds University Union (see page 34).

If you're an international researcher, our International Student Office provides specialist immigration advice along with ongoing support (see page 38).

CITY LIFE

Leeds has one of the largest student communities in the country, making it an exciting place to live and learn. It also has lots of green space and nearby countryside to escape to.

*Leeds city centre –
one of the UK's Best
Places to Live*

The Sunday Times 2019

SHOPPING

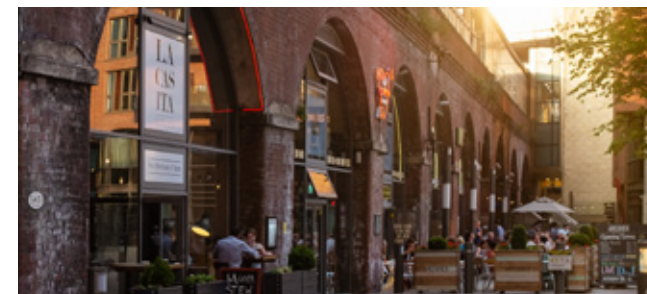
Leeds is famous for its historic shopping arcades, including the Victoria Quarter, Queen's Arcade and Thornton's Arcade.

You'll find some of your favourite designer and high-street brands under one roof in Trinity Leeds.

FOOD AND DRINK

Leeds has a thriving independent food and drink scene, hosting the popular Leeds Indie Food festival each year.

You'll find everything from quirky cafés and beer halls to rooftop bars with views of the city, as well as restaurants that feature in the Michelin Guide.



MUSIC

Leeds nightlife is legendary, with clubs and bars offering music to suit all tastes.

The First Direct Arena attracts some of the world's biggest artists to its theatre-style venue.



ARTS AND CULTURE

Leeds is one of the few cities outside London to have resident opera and ballet companies.

You'll find several theatres, art galleries and museums including The Grand Theatre, the Carriageworks, Leeds Playhouse, Leeds City Museum and Leeds Art Gallery.



SPORT

The famous Emerald Headingley Stadium is home to Leeds Rhinos rugby league and Yorkshire Carnegie rugby union teams, Yorkshire County Cricket Club and international Test Matches.

Leeds United Football Club is based at nearby Elland Road Stadium.



FURTHER AFIELD

Leeds has amazing parks and spaces such as Roundhay Park, Temple Newsam, Harewood House and Kirkstall Abbey.

You'll find traditional cities and towns nearby like York, Ilkley, Harrogate, Saltaire and the village of Haworth, home of the Brontës.





LIVING IN LEEDS

Leeds is a great place to live, with a wide range of accommodation options. Whether you're looking for a flat, studio, shared house or family accommodation, we're confident you'll find something to meet your needs.

PRIVATE ACCOMMODATION

Leeds has a wide range of good-quality private accommodation to suit all lifestyles and budgets.

The city centre offers smart, modern apartments perfect for city living. Suburbs such as Chapel Allerton and Horsforth with their local amenities, bars and restaurants are popular with young professionals. The student suburbs of Headingley and Hyde Park are just a short walk or bus ride from campus and are popular with both students and academics.

If you are relocating with your family, you will find that Leeds has many family-friendly amenities and activities available alongside good schools. Many suburbs of Leeds offer semi-detached and detached family houses.

Independent help and advice on all aspects of private accommodation is available from:

- Unipol, a student housing charity that works closely with the University
- the independent advice centre in the students' union

www.unipol.org.uk
luu.org.uk/student-advice



UNIVERSITY ACCOMMODATION

All our postgraduate accommodation is self-catered, with a well-equipped kitchen you share with a few other residents. All residences have launderettes or washing machines. There are different sizes and types of rooms to suit different budgets, including en suite or with shared bathrooms. Rooms with a shared bathroom may also have a washbasin. All rooms have a bed and mattress, wardrobe, study table, chair and shelves.

New, single international postgraduates who apply before the deadline are guaranteed University accommodation. Find out more about our guarantee at accommodation.leeds.ac.uk

If you are a UK researcher we can't guarantee you University accommodation, but don't worry, there is lots of good-quality private housing in Leeds.

Families

The University has a limited amount of family accommodation. accommodation.leeds.ac.uk/family

Our guarantee

We guarantee* an offer of University accommodation to all new, single postgraduates paying international fees who apply before the deadline.

Benefits of University accommodation

Our postgraduate-only residences are designed with you in mind, offering:

- flexible payment methods
- a safe and supported environment, with a 24-hour security service
- help and support from wardens
- a quiet place to study
- comfortable relaxation spaces
- opportunities to meet other people at a similar career stage

And don't forget, your rent includes:

- all utility bills
- wi-fi
- laundry facilities or credits
- basic contents insurance
- Edge Club gym and sports membership

*Restrictions apply relating to deadlines, residence and academic fee status.

Costs to consider

The cost of your University-managed accommodation will depend on the location you choose and the facilities on offer, with prices ranging from £105 – £147 a week (in 2020/21 academic year)*. Don't forget that basic insurance cover, wi-fi, energy costs, free use of a washing machine or laundry credits and Edge Club gym and sports membership are all included in your rent.

Flexible payment methods

We've made it easy to pay your accommodation fees. There are no hidden extras, so the price you see on your contract is what you pay. You can pay in full, or in three or eight instalments. The first instalment isn't due until October, so other than a £200 deposit payment on accepting the contract, you don't have any rent to pay until after you move in.



* It is possible that the prices quoted may change.

How to apply

You can apply for University accommodation once you have accepted your academic offer from Leeds. Remember you must apply for University accommodation by 1 July 2021. Apply online at accommodation.leeds.ac.uk

Pre-sessional courses

If you are attending a pre-sessional course, apply online through our accommodation website.

If you continue to study at the University after your summer pre-sessional course ends you must make another (second) online application for September's accommodation. Make sure you apply by the accommodation deadline of 1 July 2021.

Accommodation if you start mid-session

If your course starts outside the normal September or October date, please apply for accommodation at least two months before you arrive so we can make you an offer of accommodation.



CAMPUS LIFE

Our vibrant campus on the edge of Leeds city centre has all the amenities and services you need for the best possible experience during your time here.



STUDENTS' UNION

As a postgraduate researcher at Leeds you'll join one of the best and most active students' unions in the country – Leeds University Union. It offers great services, support and opportunities, and lots of places to meet and relax. It's also home to over 300 clubs and societies, including a dedicated postgraduate society.

Leeds University Union hosts activities exclusively for postgraduates, as well as encouraging you to make full use of the general events programme. There are volunteering opportunities and community projects you can get involved in, as well as a huge range of societies around different sports, interests, countries and activities. Explore which might suit you at findyourfit.luu.org.uk

The Union building is at the heart of campus. It contains a number of cafés, bars and food outlets, as well as performance and meeting spaces. You can buy most things there – from your everyday groceries, health food and University clothing to stationery and cards. There's even a farmers' market right outside the Union building during term time. luu.org.uk



SPORT AND FITNESS

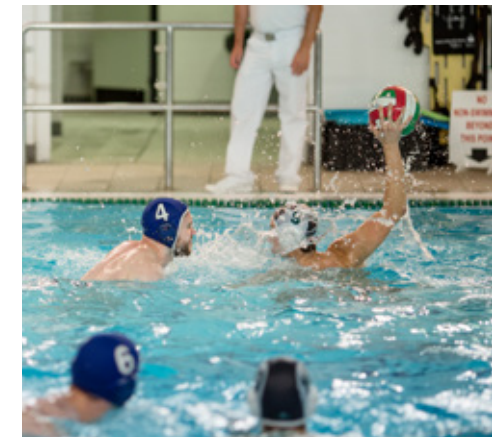
Whatever your level of fitness, you'll find lots of opportunities to keep healthy and get active.

The Edge, our indoor facility, provides excellent fitness, sport and wellbeing opportunities, including an eight-lane 25m swimming pool, a 250-station state-of-the-art gym, sauna and steam rooms, squash courts, climbing wall, personal training studio and three dedicated fitness studios, offering a wide range of classes every week during term time.

We provide excellent outdoor facilities at Sports Park Weetwood, including The Brownlee Centre, the UK's first purpose-built National Elite Triathlon training centre and a British Cycling disability hub. We also have an outdoor centre in the Yorkshire Dales, perfectly located for hiking, caving, mountain biking and climbing.

There are more than 70 sports clubs at Leeds, so whether you're into aikido or triathlon there's a club for you.

sport.leeds.ac.uk



WE'RE HERE FOR YOU

You'll have a network of support and wellbeing services dedicated to helping you.

WELLBEING AND SUPPORT

There are lots of resources and information to provide the support you need to help you flourish in your time at Leeds. Your faculty graduate school and the Doctoral College will be able to point you to all the resources, services, help and information you may need.

You'll find quick links to useful information on our students' website including money advice, health concerns, disability support, and much more.

students.leeds.ac.uk/researchdegrees

STUDENT SERVICES CENTRE

Once you've started at the University, our Student Services Centre can help and advise you on anything from accommodation and registration to fees and funding, and everything in between.

students.leeds.ac.uk

INDEPENDENT STUDENT ADVICE

Student Advice, a professional, confidential service run by Leeds University Union, can help you with any problems you have with housing, money and academic concerns, and all their help is free and completely independent of the University.

luu.org.uk/student-advice

STUDENT COUNSELLING, WELLBEING AND MENTAL HEALTH SUPPORT

There may be times when stress, emotional difficulties or upsetting life events make it harder to cope academically or personally. At Leeds you can access free professional and confidential counselling, wellbeing and mental health support through groups, workshops, single-session consultations, short-term counselling and web-based self-help resources.

students.leeds.ac.uk/supportandwellbeing

Leeds University Union's student ambassadors oversee a series of initiatives that students want – from monthly wellbeing meetups to stress management workshops.

luu.org.uk

SUPPORT FOR DISABLED STUDENTS

If you have a disability, health condition or learning difficulty, we'll work with your academic school and other services to ensure we meet your needs. Get in touch as soon as you can so we can put in place any reasonable adjustments.

students.leeds.ac.uk/settingupyoursupport

LEEDS STUDENT MEDICAL PRACTICE

A National Health Service (NHS) practice close to campus which specialises in all aspects of student health, Leeds Student Medical Practice offers all the usual family doctor services, plus other related services.

www.leedsstudentmedicalpractice.co.uk

If you need a visa to study in the UK, you will have to pay an immigration health surcharge when you make your visa application. This entitles you to health services under the National Health Service (NHS). The amount of the surcharge is based on the length of your visa.

www.gov.uk/healthcare-immigration-application



SUPPORT FOR INTERNATIONAL RESEARCHERS

You'll join a friendly and diverse global community here at Leeds.

We've been welcoming international students for over 100 years, so you can be sure of experienced help.

Our International Student Office provides specialist immigration advice along with ongoing support for international students to help you adapt and settle in to life in the UK.

You can contact our immigration advisors at internationalstudents@leeds.ac.uk www.leeds.ac.uk/immigration

BEFORE YOU ARRIVE

Our postgraduate fairs and virtual events give you the opportunity to ask questions and speak to representatives from the University. Find out about our country-specific events at www.leeds.ac.uk/visitstoyourcountry

Pre-departure briefings

We hold pre-departure briefings in a number of countries across the world. If a briefing is taking place in your country we will email you with further details. The briefings provide useful information about practical issues, such as how to travel to Leeds, how to organise your accommodation and what to bring with you.

For information about visa applications (see page 8).

ARRIVING IN LEEDS

When you arrive in Leeds, we will give you all the information you need to settle in. You can use our International Arrival Services to help make your arrival experience easier.

www.leeds.ac.uk/arrival

INTERNATIONAL WELCOME AND ORIENTATION ACTIVITIES

There are welcome activities all year round for new international researchers and their partners. There are also opportunities to meet other UK and international researchers and their families. Our online guide *Feeling at Home in Leeds* will help you settle in and make the most of University life.

We'll continue to be here for you after you've arrived too, with year-round support to help you adapt and settle into life in the UK. www.leeds.ac.uk/internationalstudents

LINK TO LEEDS

Discover more about the Leeds student experience. Talk directly to some of our current international students about being a postgraduate researcher here. Connect with our Link to Leeds ambassadors through live chats, instant messaging or social media. www.leeds.ac.uk/linktoleeds



“Leeds is a fantastic city, it's a very welcoming place. I'm from Bangladesh, and the International Student Office helped me bring my family with me. When I arrived, everything was really well organised. After all the help the University gave me, I became a student ambassador, using my experience to give advice to new international students. I felt like I'd made an impact, and made people feel part of the community.”

Rumana Hossain
Researching the experience of Bangladeshi academics on return from study abroad

www.leeds.ac.uk/rumanahossain Learn more from Rumana about being part of our global family at



PHOTO CREDITS

Page 15 top right: **Dr A. E. Hogg, CPOM, University of Leeds**

Page 15 bottom left: **Keo Theasrun, Documentation Center of Cambodia**

ALTERNATIVE FORMATS

If you require any of the information contained in this guide in an alternative format eg Braille, large print or audio, please email disability@leeds.ac.uk

CONNECT WITH US



UNIVERSITY OF LEEDS

Leeds Doctoral College
doctoralcollege@leeds.ac.uk
www.leeds.ac.uk/pgs