



Your Offer

POSTGRADUATE 2022



UNIVERSITY OF LEEDS

Our campus by the city

Parkinson Building

The iconic landmark building of the University

Edward Boyle library

Includes a postgraduate-only Research Hub

The Edge

Swimming pool, gym and sports halls

St George's Field

A beautiful green space in the heart of campus

North-east quarter

Brings together engineering, computing and physical sciences

Leeds University Union

Shops, cafés, music venues and home to our clubs and societies

Western campus

Home to our Business School and School of Law

Leeds city centre

Only a 10-minute walk from campus

Leeds train station

Leeds General Infirmary

Parkinson Building

The Edge

Edward Boyle library

Leeds University Union

St George's Field

North-east quarter

Western campus





Contents

Welcome to Leeds	4	Your future career	22
Go to the next level	5	Develop as a professional	23
Next steps	6	Finding your new home	26
Your offer explained	7	Living in Leeds	27
Information for international students	8	Campus life	30
Accepting your offer	10	Students' union	34
Fees and funding	12	Sport and fitness	35
Research excellence	14	City life	36
Research with impact	15	Wellbeing and support	40
Making a difference	16	Support services	41
Research-based learning	17	Support for international students	42
Leading research facilities	18		
Inspirational teaching	19		
Your learning environment	20		

IMPORTANT INFORMATION

Information provided by the University, such as in presentations, University brochures and on the University website, is accurate at the time of first disclosure. However, courses, University services and content of publications remain subject to change. Changes may be necessary to comply with the requirements of accrediting bodies or to keep courses contemporary through updating practices or areas of study. Circumstances may arise outside the reasonable control of the University leading to required changes. Such circumstances include industrial action, unexpected student numbers, significant staff illness (where a course is reliant upon a person's expertise), unexpected lack of funding, severe weather, fire, civil disorder, political unrest, government restrictions and serious concern with regard to the transmission of serious illness making a course unsafe to deliver. After a student has taken up a place with the University, the University will look to give early notification of any changes and try to minimise their impact, offering suitable alternative arrangements or forms of compensation where it believes there is a fair case to do so. The latest key information on courses, entry requirements and fees can be found at courses.leeds.ac.uk. Please check this website before making any decisions.

Welcome to Leeds.

Congratulations on your offer. We're delighted that you are considering the University of Leeds as your next step.



**Top 100
university in
the world**

QS World University
Rankings 2022

Go to the next level

A postgraduate degree at Leeds will provide you with a solid grounding for career progression, career change or further study. Be part of a prestigious, research-intensive university, in one of the UK's most exciting and student-friendly cities.

This guide will provide you with important information about your offer. You'll find details of our outstanding teaching, leading research facilities, accommodation and more. Discover everything we can offer you and what you need to do next.

When you come to Leeds you'll be part of a diverse community of students and staff from around the globe, with access to a worldwide network of around 300,000 alumni. The University is ranked 35th most international university in the world by Times Higher Education 2020.

COVID-19 updates

We hope that by the time you're ready to start your studies with us the situation with COVID-19 will have eased. We'll continue to review our courses and other parts of the student experience in response to COVID-19 and we may need to adapt our provision to ensure the safety of our students. Keep checking our website for the latest updates at www.leeds.ac.uk/covid19faqs

Postgraduate events

Explore your subject, meet our academic staff and chat to students at our postgraduate fairs and virtual events.

www.leeds.ac.uk/pgevents

Chat to our students

Learn about postgraduate life at Leeds from current students, through chat, blog posts and live events.

www.leeds.ac.uk/linktoleeds

Contact us

study@leeds.ac.uk

Next steps.

Choose Leeds as your university. Here's everything you need to know about your offer and how to accept your place.



Your offer explained

Accepting your offer with us is just the beginning of your journey and we'll be there to support you every step of the way.

Conditional offers

If you have received a conditional offer from the University, your place here is dependent on providing evidence that you have met the conditions outlined in your offer letter. If you have an academic offer condition, we need to see your degree certificate and transcripts as evidence.

If you have an English language condition, you may be able to meet the requirements by taking a pre-session course at our Language Centre. You can find out more on page 9.

To meet your condition(s) you can upload your evidence and accept your offer with us in the application portal at **application.leeds.ac.uk**

Unconditional offers

If you have received an unconditional offer from us, you will have met all the relevant academic and English language requirements. All you need to do is accept your offer in the application portal and, if you require a Student visa, you'll need to pay a tuition fee deposit or provide evidence that you are fully funded by a University-recognised sponsor or have a scholarship. We'll send you more information about this when you accept your offer. When you come to Leeds, make sure you bring with you your original academic documents and any translations, or certified copies.

View and accept your offer in our application portal at application.leeds.ac.uk



Information for international students

If you are coming to the UK to study, there are some additional things to consider. International students require a Student visa to study in the UK.

Applying for a visa

First, you will need to pay a tuition fee deposit or provide evidence that your tuition fees are fully covered by a University-recognised sponsor or scholarship. We will then be able to issue your Confirmation of Acceptance for Studies (CAS). Once you have this you can apply for a Student visa.

The earliest that we can issue your CAS is six months before the start of your course.

For further information on your visa application and UKVI regulations, please visit www.leeds.ac.uk/studentvisa

The University has specialist visa advisors who can answer questions about visa applications and advise on documents required at any stage in the process. You can contact them at studentvisaadvice@leeds.ac.uk



Document translations

If your offer has an academic condition, you will need to include official translations alongside your final academic documents if they were not originally produced in English. These translations should be signed and dated by an official translator and include their credentials, company details and confirmation that the translation is accurate.

Pre-sessional English courses

Improve your academic English before you start your Masters with a course at the University Language Centre. Our pre-sessional English courses can help you meet the English language requirements of your Masters and prepare you for life and study at a UK university.

You'll benefit from:

- help in improving your level of academic English to meet University entry requirements and perform effectively in the academic environment of your subject
- opportunities to practise the skills you'll need for your Masters, such as writing assignments, conducting research exercises, and participating in discussions
- learning on campus, becoming familiar with University systems, services and facilities before you begin your Masters
- learning best practice teaching methods, from staff engaged in language learning research

Whatever your field, whether arts, social sciences, business or science, our summer courses are tailored to your subject area, so you learn academic English that specifically prepares you for your degree.

Summer courses are full time over ten or six weeks (July–September) and entry requirements vary depending on the language requirements and subject area of your Masters course. Pre-sessional courses are also available for longer periods.

For more information, entry requirements, and how to apply visit

www.leeds.ac.uk/pgpresessional

Accepting your offer

I'm a UK student

I have been given a conditional offer

This means that you have not yet met the requirements for the course. The conditions of your offer are included in your letter. Please upload the documents to meet these conditions (page 7).

Accept your conditional offer at **application.leeds.ac.uk**

Please note that you may have to accept your offer again if it becomes unconditional.

I've been given an unconditional offer

This means that you have met your conditions and have a place at Leeds.

Accept your unconditional offer at **application.leeds.ac.uk**

I'm an international student

I have been given a conditional offer

This means that you have not yet met the requirements for the course. The conditions of your offer are in your offer letter. Please upload the documents to meet these conditions (page 7).

Accept your conditional offer at **application.leeds.ac.uk**

Please note that you may have to accept your offer again if it becomes unconditional.

I have been given an unconditional offer

This means that you have met your conditions and have a place at Leeds.

Accept your unconditional offer at **application.leeds.ac.uk**

I have been given a combined offer

If you take a summer pre-session English course to meet your language condition (page 9), you may be eligible for a combined offer. This means that when you pass your pre-session, and have met any conditions in your offer letter, you are automatically enrolled on your degree course.

ATAS clearance

Check your offer letter to see if you need to apply for ATAS clearance. You need to have received your ATAS clearance before you apply for your Student visa.

What we need from you

In addition to the evidence to meet your conditions, please make sure you also provide any other information requested (eg passport details and any previous UK CAS, BRPs and visas), as well information to clarify your fee status, if we asked you for this.

If your offer is unconditional and you need a Student visa, after accepting your offer you must either pay a tuition fee deposit or provide a letter showing that you are fully funded by a University-recognised sponsor. Sponsored students must also provide further information to support this at the fee-paying stage (page 13). Once we receive your deposit or funding information, we will issue your CAS.

If you have a combined offer, you will receive a joint CAS for both the pre-session and the degree course.

The earliest that we can issue your CAS is six months before your course start date. Once you've received your CAS, you can then apply for your visa.

Fees and funding

There are two main costs to consider in your postgraduate study: tuition fees and your living costs.

Financial support

Postgraduate study is a big investment, but you might be able to get financial support. Find out more at www.leeds.ac.uk/mastersfunding

Funding from the government

If you are ordinarily resident in England or the Republic of Ireland and are planning to study a taught or research Masters course full time, part time or by distance learning, you may be able to apply for a Postgraduate Loan from the UK Government. This will contribute to the cost of your postgraduate studies.

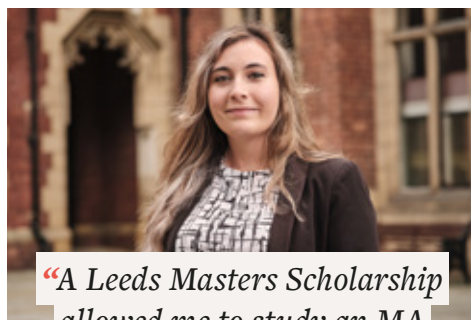
www.leeds.ac.uk/government-postgraduate-loans

For up-to-date information on the Loan for 2022 entry, visit www.gov.uk/funding-for-postgraduate-study

Funding from the University

We offer a wide range of scholarships for UK and international students to help towards paying tuition fees or living costs. Scholarships can be very competitive, so it's important you make enquiries and apply to all possible sources of funding at an early stage. Check the University website below and your academic school's webpages.

masters-scholarships.leeds.ac.uk



"A Leeds Masters Scholarship allowed me to study an MA in Advertising and Design. I gained the knowledge and confidence to get into advertising and progress faster. I'm now an Account Manager at a design and advertising agency."

Liberty Maher

Funding for international students

Check if any funding is available from your country to study in the UK. This could be from your home government, or from companies or organisations based in your home country. Visit their websites or contact your local government office.

Alumni bursary

If you are a graduate of the University of Leeds and you are studying for a Masters degree, you may be eligible for a 10% alumni tuition fee bursary. Check your eligibility at www.leeds.ac.uk/alumnibursary

Paying your tuition fees

Details of your postgraduate tuition fees have been included with your offer letter. If you have any specific questions, please contact the admissions team in your school or department.

www.leeds.ac.uk/pgfeesguidance

Deposits for international students

If you're a Masters applicant who needs a Student visa to study in the UK, you will be asked to pay a tuition fee deposit of £1,500.

Once you have accepted your unconditional offer, we will tell you how and when to pay your deposit.

We can only issue a Confirmation of Acceptance for Studies (CAS) once you have accepted an unconditional offer, provided all relevant information (such as passport details and previous UK CAS and visas) and paid the tuition fee deposit.

For more information on when a Confirmation of Acceptance for Studies (CAS) will be issued visit www.leeds.ac.uk/studentvisa

Sponsored students are exempt from paying a deposit once they have provided evidence.

For full details please visit

www.leeds.ac.uk/tuitionfeedeports

Self-funding students

As part of online registration, you will need to arrange payment of your fees in full or in two instalments. For detailed information on how to pay, please visit

students.leeds.ac.uk/feescharges



Sponsored students

If you are going to be supported financially by your government, employer or other sponsor (but not by your parents or family) you must provide a letter from the sponsor, stating the amount to be paid and the address for invoicing on letterheaded paper to sponsors@leeds.ac.uk

Sponsors must pay fees in full when invoiced, as no instalment arrangement is available. If you are a sponsored student you will be unable to register until the sponsor letter has been received and confirmed by the Student Finance (Fees) team.

More information can be found at

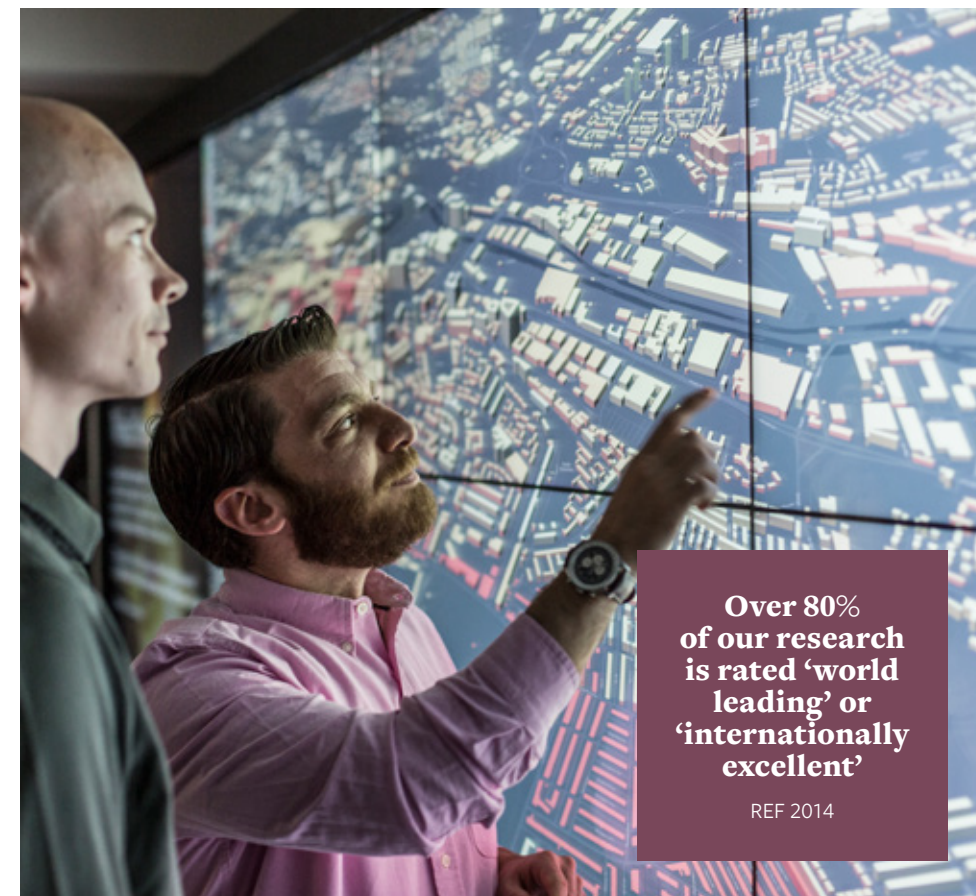
www.leeds.ac.uk/sponsoredstudents

If you have any enquiries please telephone Student Finance (Fees) on **+44 (0)113 343 6700** or email pgfees@leeds.ac.uk

We're a member
of the prestigious
Russell Group
of 24 research-
intensive
universities

Research excellence.

Challenge current thinking.
Explore pioneering research.
Become an expert in your subject.



Over 80%
of our research
is rated 'world
leading' or
'internationally
excellent'

REF 2014

Research with impact

Our academic community is engaged in pioneering research. Take strides with us to create a better world.

The world faces large and complex problems. In our drive to find solutions, we bring together wide-ranging expertise to create extraordinary solutions right here on campus.

We work collaboratively with industry and business to develop innovative commercial solutions together, through our innovation hub, Nexus, and by bringing together experts from different disciplines.

Making a difference

Our research tackles the big issues affecting today's world. Here are some of the ways our discoveries are making a real difference to society.



Combining engineering and immunology

We've pioneered a technique to avoid rejection of transplant tissue by combining our medical engineering and medical immunology expertise.



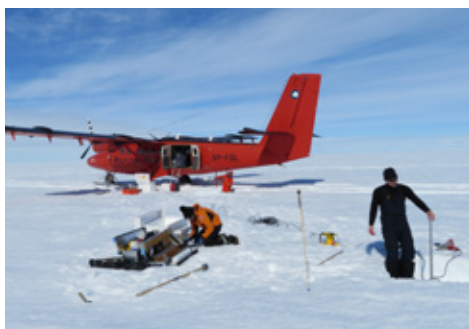
Understanding COVID-19

Our Astbury Centre for Structural Molecular Biology is part of an international collaboration using computer simulation to discover new antiviral drugs to treat COVID-19.



Empowering conflict survivors

We're supporting young conflict survivors across the world through a project which helps them use creative media to understand and share their experiences.



Estimating sea level rises

An international team, including researchers from Leeds, are estimating sea level rises more accurately, using satellite data to generate information on polar ice thickness and melting rates.

Discover more about
our leading research at
www.leeds.ac.uk/research



Research-based learning

Engage with pioneering research and teaching that is informed by the latest discoveries.

Research is at the heart of your learning at Leeds. Our academics' research feeds directly into your course, so you benefit from the latest knowledge and discoveries as they happen.

Our breadth of research expertise means we can offer an interdisciplinary curriculum, allowing you to deepen your understanding of your subject area.

As a postgraduate student, you'll be part of our dedicated research community. We encourage you to develop a research mindset – investigating, questioning and improving. You'll gain advanced research skills to apply in your final project or dissertation, and for postgraduate research.

Leading research facilities

Enhance your learning with the outstanding facilities of a leading research-intensive university.

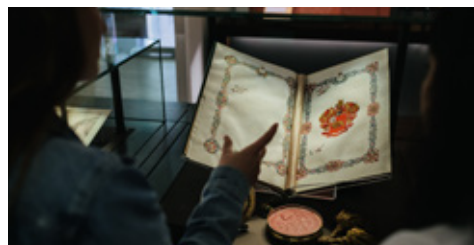
Our cutting-edge facilities could benefit you directly, or indirectly through the data and insights they provide.

Here are some of the facilities that may shape your independent research and study during your Masters.



Laboratories and clinical facilities

Science, technology, engineering and maths students can develop their knowledge and techniques using industry-standard clinical and laboratory facilities.



Special Collections

The University's Special Collections contains rare books, manuscripts and artworks for primary research.



M&S Company Archive

The archive of this well-known British company is housed on campus and offers exciting research opportunities across disciplines, from business to textiles.



Studio, workshop and performance spaces

Art, design, theatre and music students can refine their skills in fully equipped studios, workshops and performance spaces.

Discover the specialist facilities in our faculties
www.leeds.ac.uk

Inspirational teaching

We'll challenge you to explore, question and discover, and to be an active partner in your own learning.

You'll study among inspirational academics and be exposed to the latest discoveries in your subject area. Your tutors will share their research, so your learning is shaped by current ideas and expertise.

You'll benefit from a high-quality learning experience, which includes:

Digital learning

Digital learning is embedded in your study experience at Leeds. It includes:

- the latest digital learning technology in some teaching spaces, so you can work with other students and interact with your lecturer
- access to video and audio recordings of most of your lectures and other learning activities through our Virtual Learning Environment
- flexible teaching with a blend of virtual and face-to-face lectures and seminars, to maximise your learning

Academic support

There's lots of support to help you maximise your learning experience, through:

- academic study skills advice and workshops
- your personal tutor, who can help you review your academic progress and support your personal and professional development





Your learning environment

You'll find everything you need to support your studies. We're continually investing in our campus – from new laboratories and lecture theatres to one of the most impressive libraries in the UK.

Libraries

The University has one of the UK's major academic research libraries.

You'll benefit from:

- four libraries on campus, offering different working environments
- easy access to millions of printed and online resources
- spaces for group and silent individual study, as well as cafés for breaks
- IT zones and study facilities equipped with the latest technology
- expert library staff on hand to help

library.leeds.ac.uk



Postgraduate Research Hub

The postgraduate-only Research Hub in the Edward Boyle Library offers space for individual and group work, including bookable study rooms with large LED screens and lockers. It has extra-large study desks with wi-fi, individual lighting and power sockets – especially useful at writing-up stages of your research.

Skills for Masters

Develop the academic skills you need to succeed. Workshops, webinars and one-to-one appointments with our expert learning advisors can help you with dissertation writing, presenting, time management and more.

library.leeds.ac.uk/skills



Computers and software

Through your University account, you'll have access to the technologies and services to support your studies.

You'll benefit from:

- free high-speed wi-fi and 24-hour computer clusters let you study when and where you like on campus
- teaching spaces with the latest digital technology help you to learn collaboratively and interactively
- collaboration tools, like Teams, Zoom and China Connect, allow you to connect from anywhere
- a range of standard and specialist software, including Office 365, linked to your University account and available anywhere. You can access personalised content (like your timetable and library record) through the UniLeeds app
- help and support from our IT Service Desk

it.leeds.ac.uk



Language learning

Boost your employment prospects with our language learning facilities. You can improve your English or learn a different language independently, with access to learning materials in over 50 languages.

If English isn't your first language, you can improve your academic English with our pre-session courses before you start your studies (see page 9). Once you've started studying with us, you can access learning materials from our Language Zone in different languages, including English. As well as a study and resource centre on campus, we offer advice and learning resources, and language learning activities to help you study – all for free.

We also provide free English language workshops and one-to-one consultations alongside your Masters.

www.leeds.ac.uk/languagecentre

Explore campus
virtualcampustour.leeds.ac.uk

Your future career.

Build your professional and transferable skills. Take advantage of expert tuition. Access opportunities and networks to enhance your career.

5th
most targeted
UK university
by graduate
recruiters

The Graduate Market in 2021
High Fliers Research



Develop as a professional

Complement your specialist knowledge with professional skills and connections to get to where you want to be.

Industry-focused degrees

Our Masters courses are current and industry-relevant. They offer chances to connect with employers through our industry links, in the UK and overseas.

Our close partnerships with leading companies and organisations translate into stimulating learning and work opportunities. AstraZeneca and Volvo are among our long-term partners. You can attend talks by industry experts. Some of our tutors are industry practitioners and consultants, and you'll benefit from their experience.

Our industrial advisory boards input into our courses, bringing an employability focus. Some of our courses hold professional accreditations and exemptions, recognising that they meet industry quality standards.

Real-world experience

At Leeds, we believe you can create your future through the opportunities you get. That's why we make sure that there are lots of ways to develop your skills, build your CV and make valuable connections through:

- work placements which are part of some of our courses to develop professional skills in industry
- opportunities to work on short term projects or develop practical skills through fieldwork in the UK and overseas
- short work placements outside your course



Transferable skills

Transferable skills are vital whatever your career. They can help you secure and progress in the career you want.

On your course you'll gain in-depth subject knowledge. You'll also build transferable skills such as critical thinking, team working, presentation skills and project management – skills that are highly valued by employers.

You'll develop advanced research skills through your dissertation or final project, helping you to become a confident, articulate and highly employable graduate.

We offer a range of skills development opportunities through our Skills@Library service. Their free workshops and advice can help you strengthen your writing, presenting and time management.

You can also develop skills like team-working and leadership through work placements and fieldwork, and through informal routes like:

- volunteering
luu.org.uk/volunteering
- enterprise – Spark our business start-up service can provide mentoring support and guidance
www.leeds.ac.uk/enterprise
- leadership roles across our clubs and societies

Personal development

We help you go further at Leeds by offering a range of opportunities so you're ready for whatever you choose to do next. Your personal tutor will work with you to make the most of your potential.

You'll have access to thousands of LinkedIn Learning online courses across a huge range of topics – a great tool to help you improve your career prospects and support your studies.

Leeds for Life

Leeds for Life helps you make the most of your time at Leeds and prepare for your future. It helps you explore student opportunities, curriculum options and support services, and succeed in a way that works for you.

leedsforlife.leeds.ac.uk

Career planning

Our expert advice and support can help you plan your next step and advance in your chosen career. We'll help you understand your strengths and market yourself effectively.

Careers advice and information

Our Careers Service offers a range of events and support.

They can help you:

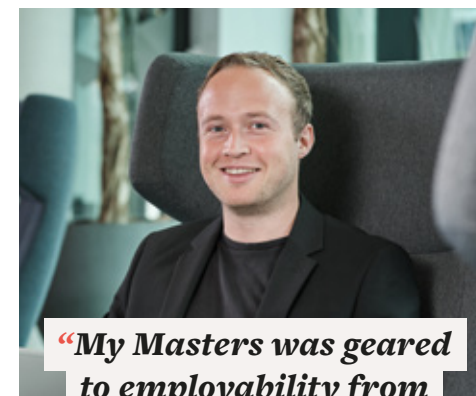
- with advice on CV writing, job applications and interview skills
- network with employers and get industry advice through events, presentations and workshops. More than 500 national and international employers target our students every year at our careers events, including AstraZeneca, Volvo, United Nations, P&G, PwC and many others are amongst our long-term partners
- find internships, placements and graduate jobs through our Careers Service website

careerweb.leeds.ac.uk

Employability events through your faculty

We also offer discipline-specific advice and careers events through your school, faculty or graduate school.

This could include advice about typical career paths and roles, help with writing your CV and job applications. They may also offer seminars with employers and alumni, and mentoring schemes. Ask your school or faculty about their employability events.



“My Masters was geared to employability from the start – from the course content to the international connections. I got a place on Samsung’s highly competitive Emerging Talent graduate scheme, I progressed from this to be a marketing manager.”

Jack Castledine
Alumni mentor

Connect with our alumni

You can access one of the biggest alumni communities of any UK university – a global network of around 300,000 Leeds graduates in 192 countries.

Connect with alumni around the world and benefit from mentoring, talks, internships and the scholarship opportunities they provide. There are career networking events where you can hear some great success stories, raise your aspirations and expand your professional network.

careerweb.leeds.ac.uk

Finding your new home.

Starting postgraduate study may mean finding a new home. There is expert advice to help you find University or private sector options.

Leeds
One of the
Best Places to Live
in 2021 (North and
Northeast)

The Times and
Sunday Times

Living in Leeds

You'll soon feel at home here in Leeds. We're sure you'll find something to meet your needs, whether you're looking for a flat, a shared house or family accommodation.

University accommodation

All our University postgraduate accommodation is self-catered, with a well-equipped kitchen you share with a few other residents. All residences have launderettes or washing machines.

There are different sizes and types of room to suit different budgets, including en-suite and with shared bathrooms. Rooms with a shared bathroom may also have a washbasin. All rooms have a bed and mattress, wardrobe, study table, chair and shelves.

If you are a new, single postgraduate student paying international fees and you apply before the deadline, we guarantee* an offer of University accommodation.

If you are a UK student we can't guarantee University accommodation, but don't worry, there is lots of good-quality private housing for students in Leeds (see page 29).

Find out more about our guarantee at accommodation.leeds.ac.uk

Chat to our current students
about accommodation
www.leeds.ac.uk/linktoleeds

We guarantee* an offer of single University accommodation to all new, single postgraduate students paying international fees who apply before the deadline.

Benefits of University accommodation

Our postgraduate-only residences are designed with you in mind, offering:

- flexible payment methods
- a safe and supported environment, with a 24-hour security service
- help and support from wardens
- a quiet place to study
- comfortable relaxation spaces
- opportunities to meet other people at a similar career stage

And don't forget, your rent includes:

- all utility bills
- wi-fi
- basic contents insurance
- free Edge Club gym and sports membership

*Restrictions apply relating to deadlines, residence, academic fee status and level of study.



“My University residence is close to campus and it feels safe, with security services on call 24 hours a day. Living with other international postgraduates means you can study and share ideas.”

Qian Wang



Our postgraduate residences are all self-catered and have a 51-week contract length. They are:

Accommodation	En-suite available	Number of beds	Distance from Uni	Prices per week in 2021/22*
Blenheim Point	Yes	180	200m	from £143
Grayson Heights	No	110	3.4km	from £105
Royal Park Flats	No	112	1.5km	from £111
St Mark's Residence	Yes	526	400m	from £148

Prices reflect differences in room size or facilities. These things determine exactly what you pay per week. The price you see on your contract is the price you will pay.

* For the latest information on accommodation costs visit accommodation.leeds.ac.uk/postgraduate

Costs to consider

The cost of your University accommodation will depend on the location you choose and the facilities on offer, with prices ranging from £105–£153 a week*. Don't forget that basic insurance cover, wi-fi, energy costs, free use of a washing machine or laundry credits and Edge Club gym and sports membership are all included in your rent.

Flexible payment methods

We've made it easy to pay your accommodation fees. There are no hidden extras, so the price you see on your contract is what you pay. You can pay in full, or in three or eight instalments. The first instalment isn't due until October, so other than a £200 deposit payment on accepting the contract, you don't have to pay any rent until after you move in.

How to apply

You can apply for University accommodation once you have accepted your academic offer from Leeds. Remember you must apply for University accommodation by 1 July 2022. Apply online through our accommodation website.

www.leeds.ac.uk/accommodation-pg-apply

Pre-sessional courses

If you are attending a pre-sessional course, apply online through our accommodation website.

If you continue to study at the University after your summer pre-sessional course ends you must make another (second) online application for your accommodation from September. Make sure you apply by the accommodation deadline of 1 July 2022.

Accommodation if you start mid-session

If your course starts outside the normal September date, please apply for accommodation at least two months before you arrive so we can make you an offer of accommodation.

* This year's prices may change in the next academic year.



Private sector accommodation

Leeds has a wide range of good-quality private accommodation to suit all lifestyles and budgets, ranging from family and shared houses to studios and en-suite accommodation in private, large developments. Local suburbs offer family homes, good schools and green spaces.

Costs will depend on the type of property and location you choose. From the leafy suburbs of Horsforth and Headingley to modern city centre apartments, there are lots of options to choose from.

Independent help and advice

You can find out about all types of accommodation through Unipol, a student homes charity, which also has information about average rent costs in Leeds.

www.unipolhousing.org.uk/leeds

For independent help and information about all aspects of private accommodation, the student union has an advice centre.

www.luu.org.uk/student-advice

Campus life.

Our single-site campus has everything you'd find in a small town and it's just a short walk from the centre of our thriving, multicultural city.

On campus

Join our global community and immerse yourself in student life at Leeds.



The Stanley & Audrey Burton Gallery



The gym at The Edge, our indoor sports facility

Explore campus

virtualcampustour.
leeds.ac.uk



Balcony café in Leeds University Union



Learn about growing food in our sustainable garden



Precinct in front of Leeds University Union and the Refectory

Smokefree campus

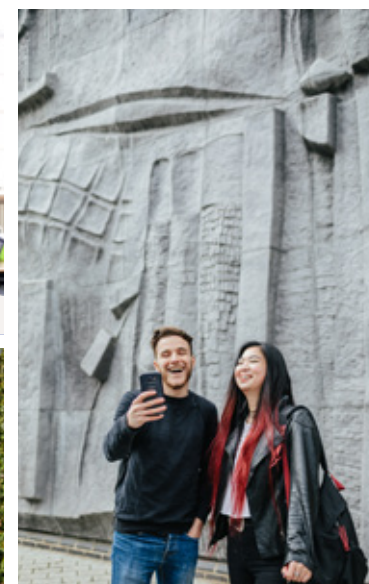
For everyone's health and wellbeing we've created a smokefree campus
students.leeds.ac.uk/smokefree



Outside Nexus, the University's innovation hub



Spaces to relax or work in Leeds University Union



Bas relief frieze on the stage@leeds building, one of many artworks on campus



The Great Hall, where graduations and other formal events take place

Students' union

Join one of the best and most active students' unions in the country. Its mission is to make sure you love your time at Leeds.

Leeds University Union is a place to meet, work, socialise and relax. It also offers independent help, advice and support.

It is 100% student-led, with postgraduate student representatives in every school, so you can make sure your views are heard and influence real change in the Union, across the University and even in the city itself. You can join student campaigns and find a job through the Union's job shop, Joblink.

The Union building is in the middle of campus. You can buy most things there – from everyday groceries and University clothing to books and stationery.

The Union has cafés, bars and clubs, as well as performance spaces. Top bands and artists play there too.

Get involved

Whatever hobby you're into, or fancy trying, you'll find a club or society and some like-minded people. With more than 300 student-led clubs and societies, everything is covered – from faith to hiking, film to snowboarding, and plenty of general interest societies. There's a dedicated postgraduate society and most academic schools have their own societies too, offering both social and professional events.

www.luu.org.uk

**More than
300 clubs
and societies
for you to
choose from**



"I spend most of my free time in the societies. It's a great way to relax and there's a real sense of community. I've made lots of friends through the K-pop dance society and this has exposed me to different cultures."

Adeline Wong



Sport and fitness

Keep fit, unwind and socialise with a whole range of sports and fitness opportunities.

The Edge, our indoor sports facility on campus, has a 250-station gym with the latest Technogym equipment and Sky TV, a 25m swimming pool, sauna and steam room, squash courts, sports halls, climbing wall and a wide variety of exercise classes in term-time and virtual classes on demand.

sport.leeds.ac.uk/the-edge

There are excellent outdoor sports facilities at nearby Sports Park Weetwood and Bodington Playing Fields, including a 1.6km outdoor-lit cycling circuit. An outdoor centre in the Yorkshire Dales offers hiking, caving, mountain biking and climbing.

sport.leeds.ac.uk/facilities

There are more than 70 sports clubs at Leeds, so whether you're into aikido or triathlon there's a club or social league for you.

sport.leeds.ac.uk/sport



City life.

A lively, cosmopolitan city in the centre of the UK. Easy access to London and mainland Europe. Beautiful countryside nearby. Just some of the reasons our students love Leeds.

Leeds

Our campus is just a 10-minute walk from the vibrant city centre.

Leeds has everything you'd expect from one of the UK's largest and fastest-growing cities making it an exciting place to live and learn. It's also surrounded by lots of green space and stunning countryside to escape to.

If you're relocating to Leeds we're confident it won't be long before you're calling it home.



Belgrave Music Hall and Canteen in Leeds city centre



County Arcade, one of the city's many historic shopping arcades



Leeds Central Library and Art Gallery



Restaurants and bars at Granary Wharf

Read more about what
Leeds has to offer at
www.leeds.ac.uk/citylife



Kirkgate Market, one of Europe's biggest indoor markets



Live at Leeds music festival



Light Night Leeds, the UK's largest annual arts and light festival



Trinity Kitchen, a mix of restaurants and street food vans



The Royal Armouries, a national museum of arms and armour, with live jousting displays



The famous Emerald Headingley Stadium



Tour de Yorkshire cycle race



Taking a rowing boat out on the river is a great way to see Knaresborough



Kirkstall Abbey, ruins of an 800-year-old Cistercian monastery



Scarborough, a seaside resort on Yorkshire's east coast

Wellbeing and support

You'll have a network of support and wellbeing services dedicated to helping you.

Support services

You'll be able to access lots of resources and information to help you through your time at Leeds.

Our For Students website directs you to these support services, making it easy for you to find the right help when you need it.

students.leeds.ac.uk

Once you've started at the University, our student information points can offer guidance on accommodation, registration, fees and funding.

Independent student advice

Leeds University Union offers impartial help and support with any problems you have as a student. Although the team specialises in housing, money and academic concerns, they can support you with anything. Their help is free and completely independent of the University.

www.luu.org.uk/student-advice

Student mental health and wellbeing

You can access free professional and confidential counselling, wellbeing and mental health support in a range of ways, including through groups, workshops, single-session consultations, short-term counselling and web-based self-help resources.

students.leeds.ac.uk/supportandwellbeing



Support for disabled students

If you have a disability, health condition or learning difficulty, we'll work with your academic school and other University services to ensure we meet your needs. Get in touch as soon as you can so we can put in place any reasonable adjustments.

students.leeds.ac.uk/settingupyoursupport

Medical care

Leeds Student Medical Practice is a National Health Service (NHS) practice which cares for students and their immediate families. It's close to campus and offers all the usual general practitioner (GP) services.

www.leedsstudentmedicalpractice.co.uk

If you need a visa to study in the UK, you will have to pay an immigration health surcharge when you make your visa application. This entitles you to health services under the National Health Service (NHS). The amount of the surcharge is based on the length of your visa.

www.gov.uk/healthcare-immigration-application



Support for international students

You'll join a friendly and diverse global community here at Leeds.

We've been welcoming international students for over 100 years, so you can be sure of experienced help and support.

Before you arrive

Our team of Student visa experts can give you free specialist immigration advice. There's also ongoing support to help you adapt and settle into life in the UK.

You can contact our immigration advisors on:
studentvisaadvice@leeds.ac.uk
www.leeds.ac.uk/immigration

We'll provide information and services to help you prepare for travel to the University and to welcome you on arrival. You'll get practical advice such as how to organise your accommodation and what to bring with you.

www.leeds.ac.uk/travel

We hold pre-departure briefing sessions for international students, both online and in some countries, to help you prepare for your time at Leeds. Invitations to these events will be sent to you by email.

We also hold and attend a range of virtual and in-country events to give advice on life as an international student in Leeds.

www.leeds.ac.uk/visittostyourcountry

We have offices in China, India, Japan, Malaysia and Nigeria, as well as a global network of representatives who can advise you about studying here.

www.leeds.ac.uk/meetus

Chat to our students
www.leeds.ac.uk/linktoleeds



Arriving in Leeds

When you arrive in Leeds, our welcome team will give you all the information you need to settle in. Find out more about how we can help with a smooth arrival in Leeds at

www.leeds.ac.uk/arrival

You'll be invited to our international welcome activities, a free programme of useful information sessions and social activities. It's an ideal way to be introduced to life at Leeds and to meet new people.

Settling in

There are lots of ways to make friends at the University. Enjoy your favourite interests and hobbies or try out new ones through the many clubs and societies at Leeds University Union. You can also meet students from all around the world at our weekly Global Café.

Ongoing support

There is lots of support to help you throughout your time at Leeds, including visa and immigration advice and activities specifically for international students. Find out more about support and being an international student at Leeds at

www.leeds.ac.uk/internationalstudents



"You could say Leeds is the home of

international students.

I have friends from so many nationalities. The weekly Global Café in the students' union was where I met people from all over the world."

Haleemah Alaydi

Alternative formats

If you require any of the information contained in this guide in an alternative format eg Braille, large print or audio, please email

disability@leeds.ac.uk

Connect with us



UNIVERSITY OF LEEDS

Admissions enquiries
study@leeds.ac.uk
www.leeds.ac.uk/masters

Version 1. September 2021